



VICEROY

TRIPLE LEG SUBSOILER WITH ROLLER

Owners Illustrated Instruction Book & Parts List

Grovebury Road, Leighton Buzzard, Bedfordshire. LU7 4UX. UK.
Tel:01525 375157. Fax:01525 385222.
Email:info@brownsagricultural.co.uk

INTRODUCTION

Sales no. 65920 – Viceroy Twin Leg Subsoiler – Diagram 1

The Viceroy Twin Leg Subsoiler is designed to fit Category 2 three point linkage. The machine has legs which are adjustable up to a maximum of 82" (2080mm) leg centres.

The Viceroy is protected against damage by using a shear bolt fitted in hardened bushes. The working depth can be controlled up to a maximum of 22" (559mm) for both subsoiling and moledraining.

Sales No. 51675 – Viceroy Subsoiler WEIGHT 697lbs (316kgs)

The Subsoiler blade is fitted with a double edged reversible share to give extended life. A Bolt-on Wing Kit (50677) is available for increased soil shatter.

WING KIT 50677 – Diagram (b)

Where the Wing Kit is to be fitted, the centre inner and outer tension pins should be removed to allow the fixing studs – Item 2 Diagram (b) to be fitted through the subsoiler foot. The Wings should then be secured using the nuts and spring washers Items 7 & 8 Diagram (b).

Sales no. 65930 – Viceroy Twin Leg Moledrainer – Diagram 2

The Viceroy Moledrainer blade complete with bladesaver edge is individually renewable.

Sales no. 51676 – Viceroy Moledrainer WEIGHT 692lbs (314kgs)

Expander attachments of 2³/₄" (70mm) and 3¹/₄" (84mm) diameter can be obtained for use with the Moledrainer blade.

Pipe laying couplings are available for 1¹/₂" – 3³/₄" (13mm) – (19mm) and 1" (25mm) diameter tube. (Please state size required)

NOTE:- ALL REFERENCES TO L.H. OR R.H. ARE TAKEN FROM THE REAR OF THE MACHINE LOOKING FORWARD.

WARNINGS

- A. Do not make sharp turns while the implement is in the ground.
- B. If hard facing is applied to the blade Warranty becomes void.
- C. Check the tightness of all bolts periodically.
- D. Ensure the correct shear bolt is fitted. On no account must any other size or grade of bolt be fitted.
- E. Grease the sic coulter hub bearing daily.
- F. At the end of each working day the coulter blade assembly should be cleaned and the polished parts brushed over with oil to prevent rusting.

ATTACHING TO THE TRACTOR

- 1. Attach to tractor lower link arms to the L.H. and R.H. lower linkage plates using the pins provided and secure with the linch pins. Use the levelling lever to facilitate fitting and then ensure that the implement is level with the ground; in work.

NOTE! Two height positions are available to suit conditions.

- 2. Adjust the tractor top link until it can be fitted to the headstock plates and secure with the top linkage pin and linch pin.

NOTE! For Category 2 linkage on Viscount use sleeves items

- 3. The external check chains on the lower links should be adjusted so that the implement has a small amount of side movement.

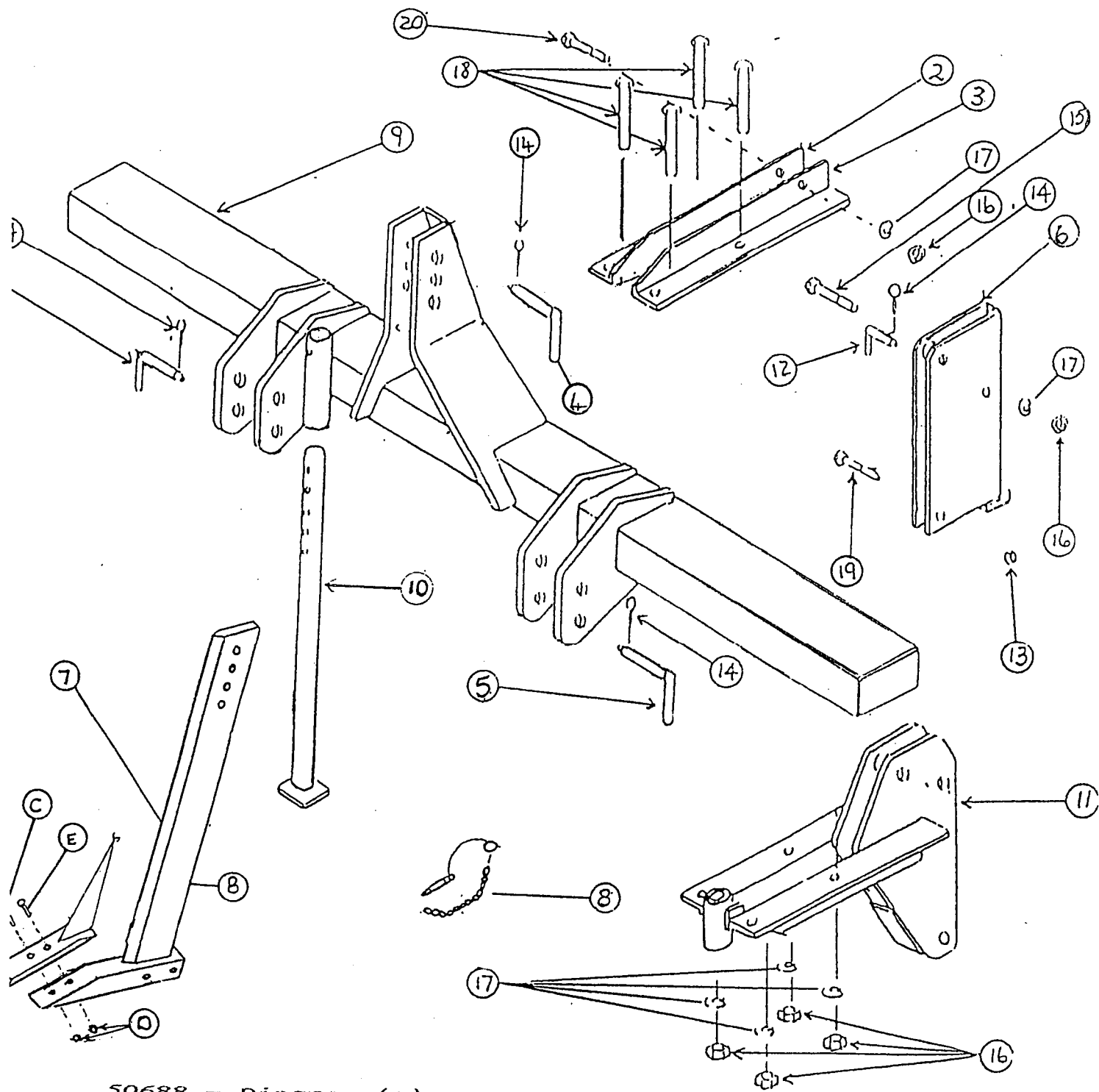
OPERATION

The required working depth is controlled by the draft control lever. It is advisable if, when commencing operation hard ground conditions are encountered, to make an initial run at less than required maximum depth. At working depth the implement must run level. This fore and aft levelling is adjusted by altering the length of the tractor top link. Too short and the implement will have a tendency to dig in, resulting in excessive draft. Too long and it will tend to ride out of the ground.

OPERATION FOR MOLEDRAINER WITH PIPE LAYING ATTACHMENT

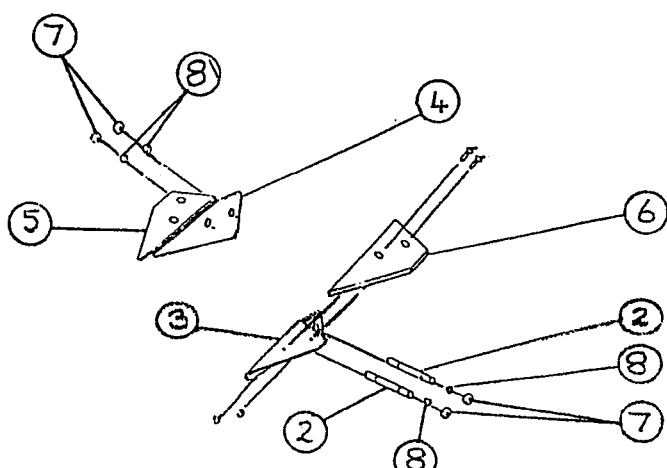
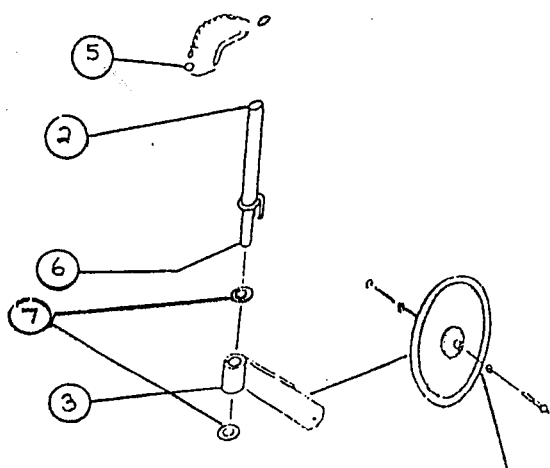
On ground where pipes are to be laid make a preparatory run with the Moledrainer without pipe feeding. This will unearth any hidden obstruction and act as a guide along which the pipe can be laid.

65920 - DIAGRAM (1)



50688 - Diagram (a)

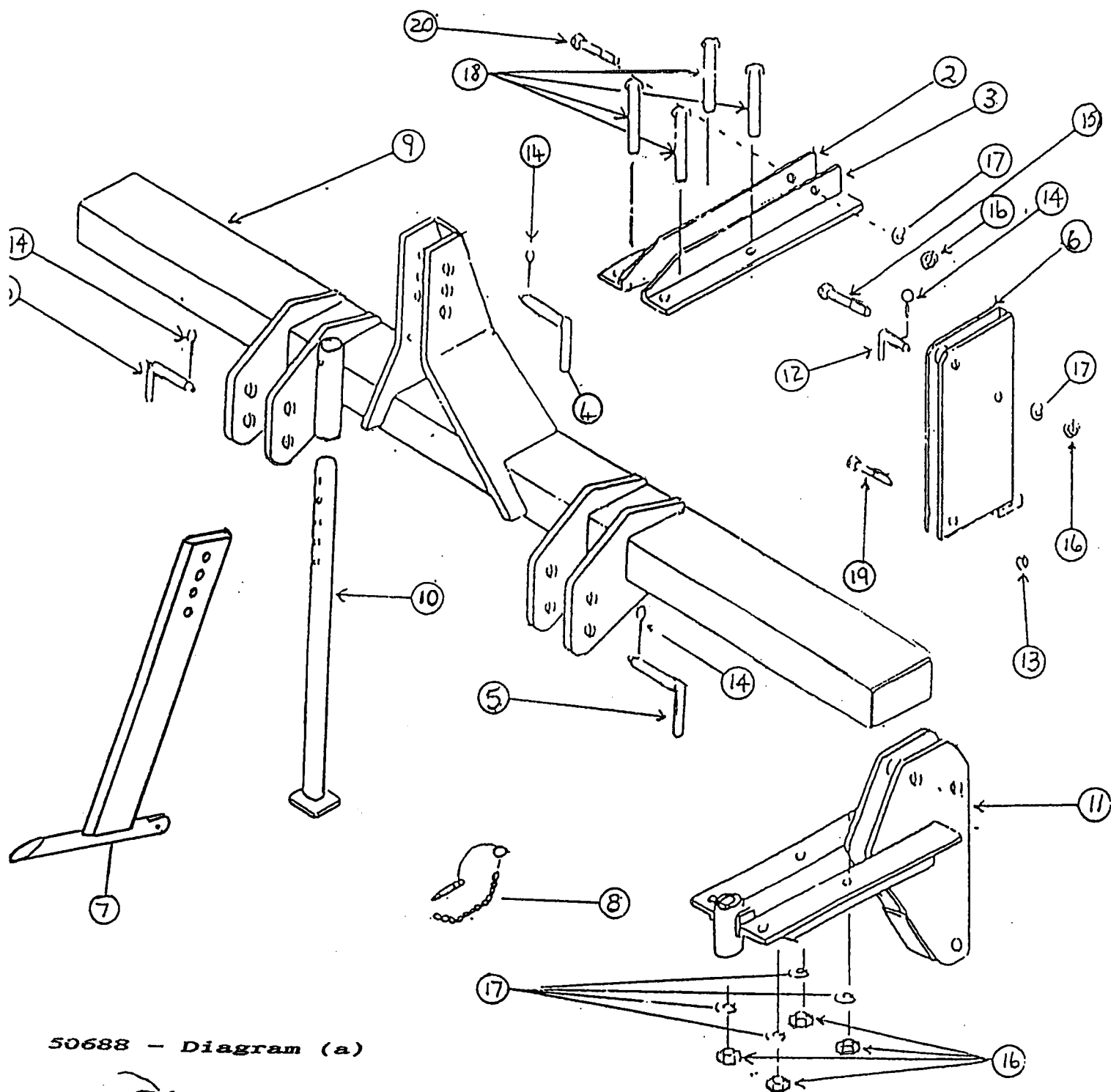
50677 - Diagram (b)



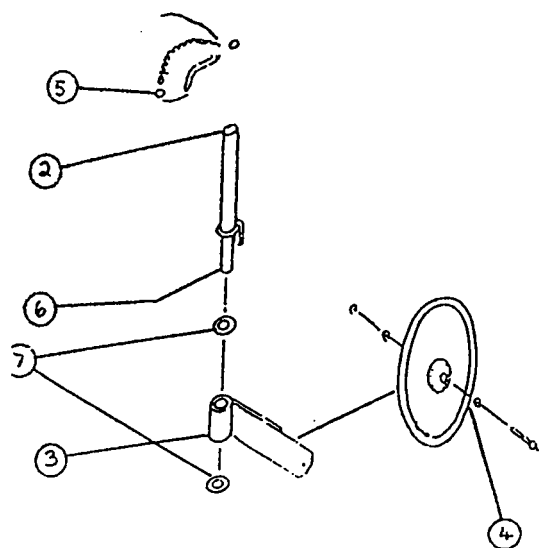
PART NUMBERS FOR 65920 DIAGRAM 1

ITEM	PART NO	QTY.	DESCRIPTION
2	12663	2	Angle Plate * Right Hand
3	12664	2	Angle Plate * Left Hand
4	50075	1	Top Linkage Pin
5	50102	2	Bottom Linkage Pin
6	50590	2	Blade Housing Assembly
7	50633	2	Subsoiler Leg Assembly * Includes
* A	51430	1	Blade Saver Point
* B	51674	1	Blade
* C	70317	1	Bolt * C.S.K. Sq UNF - 8.8 * 1 1/2"
* D	70318	2	Nut * UNF
* E	70319	1	Bolt * C.S.K. Sq UNF - 8.8 * 2"
8	50672	1	Pin & Chain Assembly
9	50944	1	Main Frame
10	50965	1	Stand
11	51258	2	Mounting Angle
12	51673	2	Pin * SA 71
13	70011	4	Nut * Thin Type * M10 Nylock
14	70033	5	Linch Pin 7/16R
15	70320	2	Bolt * See 70345 Shear Bolt
16	70321	12	Nut * Full * M20
17	70324	12	Washer * M20 Spring
18	70326	8	Bolt * M20
19	70341	4	Shear Bolt * M10
20	70613	2	Bolt * M20

65930 - DIAGRAM (2)



50688 - Diagram (a)



OPTIONAL PIPE LAYERS & EXPANDERS
(STATE SIZE REQUIRED)

51790 - 2³/₄" (70mm) Expander
 51793 - 3¹/₄" (84mm) Expander

51770 - 1¹/₂" - 3¹/₄" (13mm-19mm)
 Pipe Layer Assembly

51771 - 1" (25mm) Pipe Layer Assembly

PART NUMBERS FOR 65930 – DIAGRAM 2

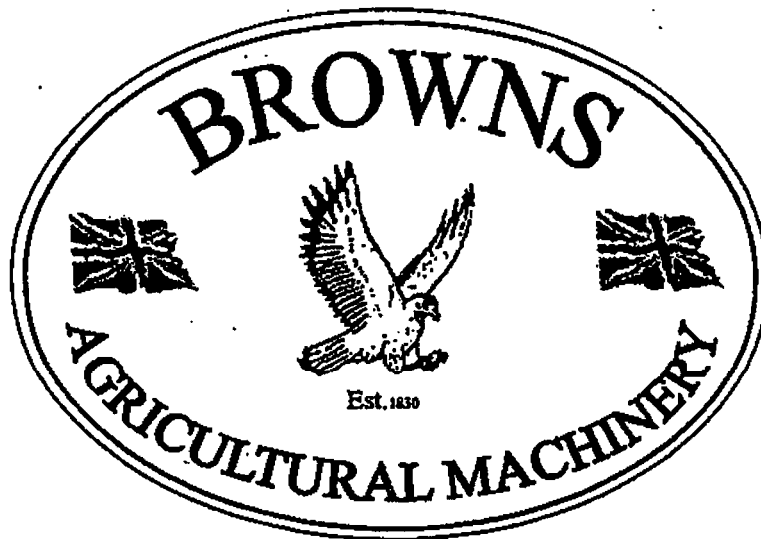
<i>ITEM</i>	<i>PART NO</i>	<i>QTY.</i>	<i>DESCRIPTION</i>
<i>2</i>	<i>12663</i>	<i>2</i>	<i>Angle Plate * Right Hand</i>
<i>3</i>	<i>12664</i>	<i>2</i>	<i>Angle Plate * Left Hand</i>
<i>4</i>	<i>50075</i>	<i>1</i>	<i>Top Linkage Pin</i>
<i>5</i>	<i>50102</i>	<i>2</i>	<i>Bottom Linkage Pin</i>
<i>6</i>	<i>50590</i>	<i>2</i>	<i>Blade Housing Assembly</i>
<i>7</i>	<i>50634</i>	<i>2</i>	<i>Moledrainer Leg Assembly</i>
<i>8</i>	<i>50672</i>	<i>1</i>	<i>Pin & Chain Assembly</i>
<i>9</i>	<i>50944</i>	<i>1</i>	<i>Main Frame</i>
<i>10</i>	<i>50965</i>	<i>1</i>	<i>Stand</i>
<i>11</i>	<i>51258</i>	<i>2</i>	<i>Mounting Angle</i>
<i>12</i>	<i>51673</i>	<i>2</i>	<i>Pin * SA 71</i>
<i>13</i>	<i>70011</i>	<i>4</i>	<i>Nut * Thin Type * M10 Nylock</i>
<i>14</i>	<i>70033</i>	<i>5</i>	<i>Linch Pin 7/16R</i>
<i>15</i>	<i>70320</i>	<i>2</i>	<i>Bolt * See 70345 Shear Bolt * M20</i>
<i>16</i>	<i>70321</i>	<i>12</i>	<i>Nut * Full * M20</i>
<i>17</i>	<i>70324</i>	<i>12</i>	<i>Washer * M20 Spring</i>
<i>18</i>	<i>70326</i>	<i>8</i>	<i>Bolt * M20</i>
<i>19</i>	<i>70341</i>	<i>4</i>	<i>Shear Bolt * M10</i>
<i>20</i>	<i>70613</i>	<i>2</i>	<i>Bolt * M20</i>

50688 - Disc Coultter Assembly - Diagram (a)

ITEM	PART NO	QTY.	DESCRIPTION
2	50591	1	Shaft
3	50622	1	Disc Coultter Arm
4	50635	1	Disc coultter Assembly c/w Hub
5	50672	1	Pin and Chain Assembly
6	70035	1	Cotter Pin
7	70189	2	Washer (3mm Thick)

50677 - Subsoiler Wing Kit - Diagram (b)

ITEM	PART NO	QTY.	DESCRIPTION
2	11404	2	Stud
3	50675	1	Wing Mounting L.H.
4	50676	1	Wing Mounting R.H.
5	51850	1	Wing Share (R.H. c/w Nuts & Bolts)
6	51851	1	Wing Share (L.H. c/w Nuts & Bolts)
7	70056	4	Nut
8	70134	8	Washer



EC DECLARATION OF CONFORMITY

Manufacturer : Browns Agricultural Machinery Co. Ltd.

Description of Machinery : Viceroy Triple Leg Subsoiler

Model Number 65925

This machine complies with EC Directives, Transposed Harmonised Standards, National Standards and Technical Specifications as follows:

89/392/EEC 91/386/EEC 93/44/EEC 93/68/EEC EN 292 pr EN 691

The machinery has been designed taking into account the essential Health & Safety Standards as detailed in the Supply of Machinery (Safety Regulations) 1992.

For and on behalf of the Manufacturer

Name : J. W. G. BROWN

Status : MANAGING DIRECTOR

The above machinery taking into account the state of art complies with or is designed and constructed so far as possible, to comply with the relevant Health & Safety requirements as indicated in the Technical file.

THE COMPANY IS CONTINUALLY STRIVING TO IMPROVE ITS PRODUCTS AND RESERVES THE RIGHT TO MAKE IMPROVEMENTS OR CHANGES WITHOUT INCURRING ANY OBLIGATION TO ALTER ANY OF ITS MACHINES PREVIOUSLY SOLD.