



# BROWNS

EST: 1830

Agricultural Machinery Co. Ltd

Manufacturers of Farm Implements & Machinery

## ***SUPER BUZZARD***

BIG BALE HANDLER

Owners Illustrated Instruction Book & Parts List

Grovebury Road, Leighton Buzzard, Bedfordshire. LU7 4UX. UK.

Tel:01525 375157. Fax:01525 385222.

Email:[info@brownsagricultural.co.uk](mailto:info@brownsagricultural.co.uk)

## INTRODUCTION

*Brown's One and Two bale Super Buzzards are suitable for fitting to 30cwt. tractor mounted front end loaders.*

*The Three bale Super Buzzard is designed to be used only on industrial loaders and fork-lifts.*

*All Super Buzzards are free standing when not in use.*

## FITTING SUPER BUZZARDS

The One bale Super Buzzard can be fitted using Brown's Universal fitting kit (part no. 51722), with the exception of Quick Detach systems.

*Two and Three bale Super Buzzards, due to the weight involved, need weld-on brackets, which are best purchased from the loader distributor.*

*Fit hydraulic supply, if it possible to connect the two rams separately if so desired (Three bale model only).*

On the Two bale Super Buzzard the solenoid valve needs a 12v DC supply from the tractor, using the plug provided, or wiring into the tractor supply.

*BROWN* ----- *LIVE*  
*BLUE* ----- *NEUTRAL*

The change over switch is manufactured to fit over the existing valve handle, (first remove the push-on knob) the switch is of the latching type, i.e. 'Press and release' to change hydraulic flow between rams.

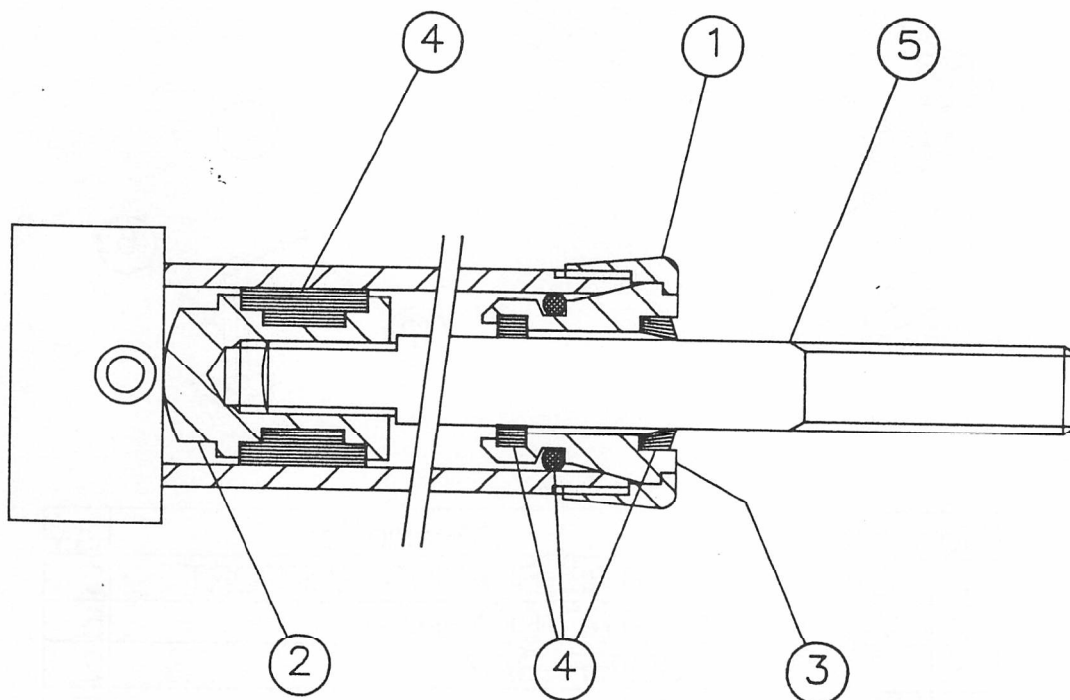
FITTING OPTIONS FOR BROWNS, SB 1 ( 65260 ) SB 2 ( 65240 ) & SB 3 ( 65250 ) SUPER BUZZARDS								
	VICON MP 800	M-F 5	FORD NEW HOLLAND		FIATAGRI HESSTON		WELGER DELTA 5000	CLASS QUADRANT
			D 800	D1000	4600	4700		
GRAB FOR ONE BALE	* SB 1	* SB 1	* SB 1	* SB 1	* SB 1	* SB 1	* SB 2	* SB 2
GRAB FOR TWO BALES	* SB 2	* SB 2	* SB 2	* SB 2	* SB 2	* SB 2	SB 3	SB 3
GRAB FOR THREE BALES	SB 3	SB 3	SB 3	SB 3	SB 3	SB 3	NR	NR

\* = SUITABLE FOR FITTING TO 30 cwt TRACTOR MOUNTED FRONT END LOADERS  
WHEN HANDLING FULL LENGTH STRAW BALES

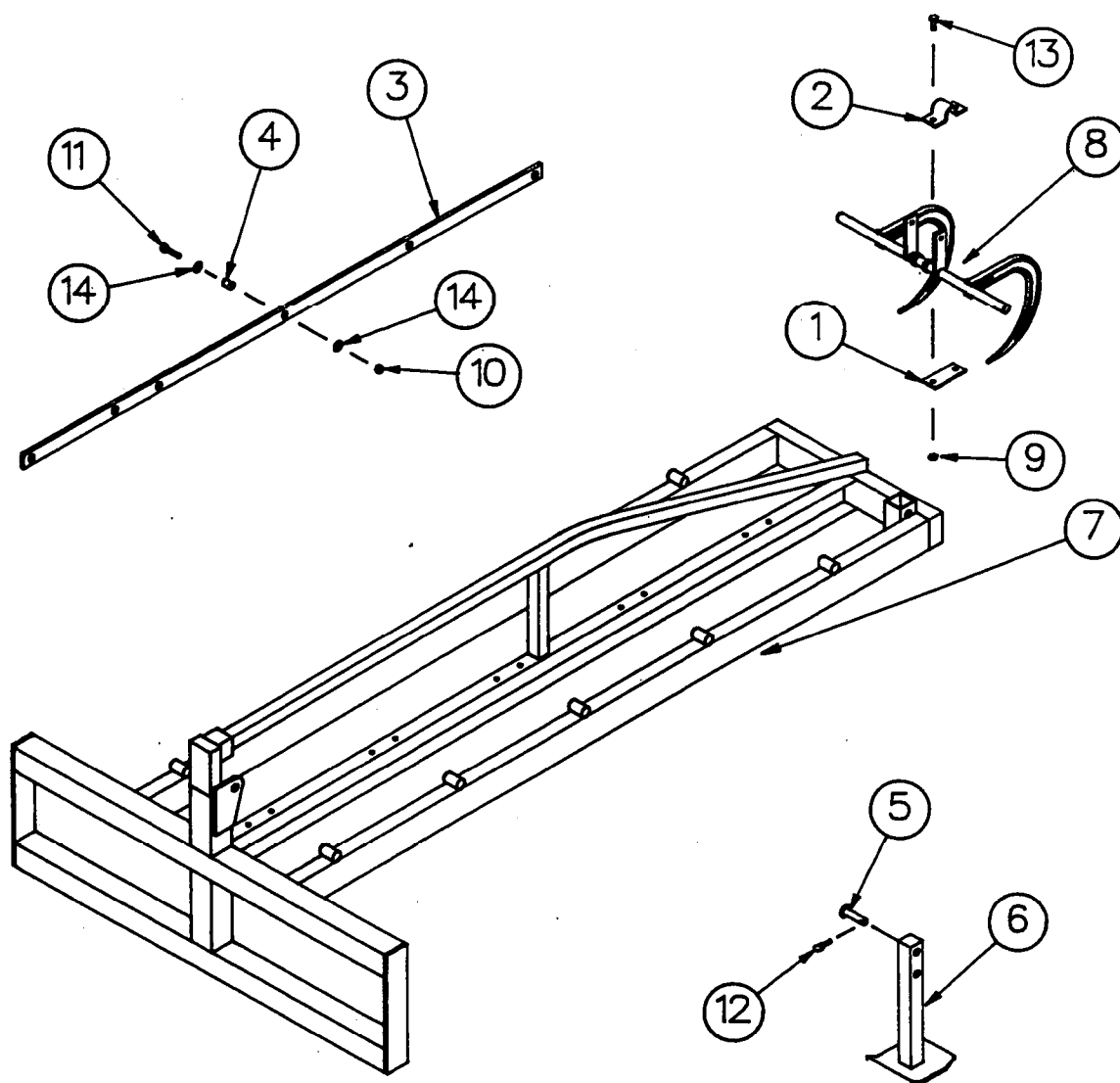
NR = NOT RECOMMEND

# HYDRAULIC CYLINDER PART No. ( 71460 ) BREAKDOWN

ITEM	PART	DESCRIPTION	QTY
1	91823	END CAP	1
2	91824	PISTON HEAD	1
3	91829	HEAD BUSH	1
4	91830	SEAL KIT	1
5	91835	RAM ROD	1



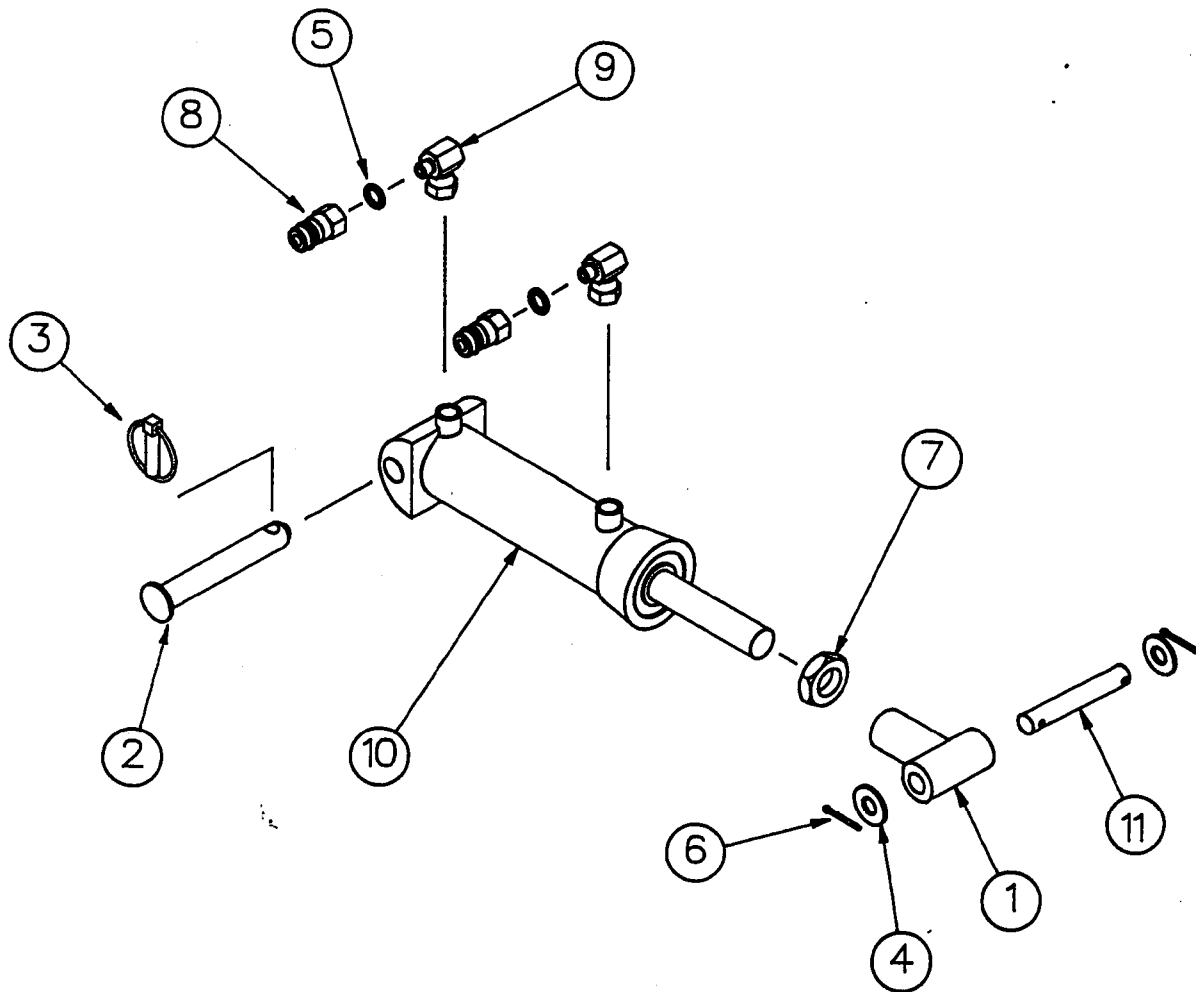
1 BALE SINGLE RAM SUPER BUZZARD



No.	Part No.	Description	Qty
1	13440	CENTRE BEARING SUPPORT	5
2	13441	CENTRE BEARING	5
3	13442	PUSHER BAR	2
4	13918	BUSH	10
5	51673	PIN	1
6	51918	LEG	1
7	51922	MAIN FRAME	1
8	52445	CLAW UNIT	5
9	70011	M10 NYLOCK NUT	10
10	70012	M12 NYLOCK NUT	10
11	70026	M12 SETSCREW	10
12	70033	LINCH PIN	1
13	70058	M10 SETSCREW	10
14	70136	M12 WASHER	20

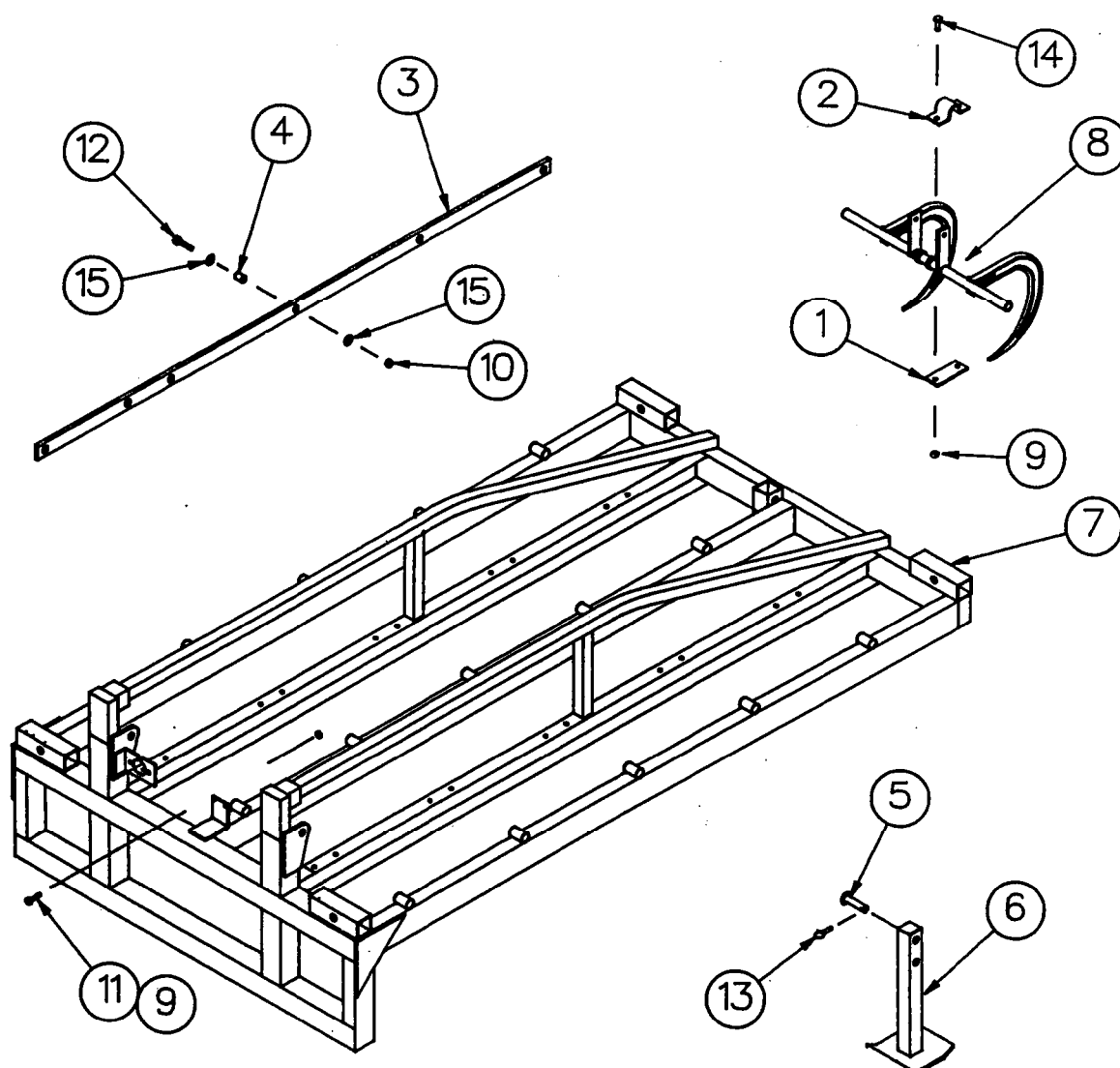
# 1 BALE SINGLE RAM SUPER BUZZARD

## HYDRAULICS LAYOUT



No.	Part No.	Description	Qty
1	52546	TEE PIECE	1
2	51354	PIN	1
3	70033	LINCH PIN	1
4	70073	M20 WASHER	2
5	70122	DOWTY SEAL	2
6	70133	COTTER PIN	2
7	70138	7/8 UNF NUT	1
8	70376	Q/R PROBE	2
9	71073	90 DEG. ADAPTOR	2
10	71460	RAM	1
11	15365	PIN	1

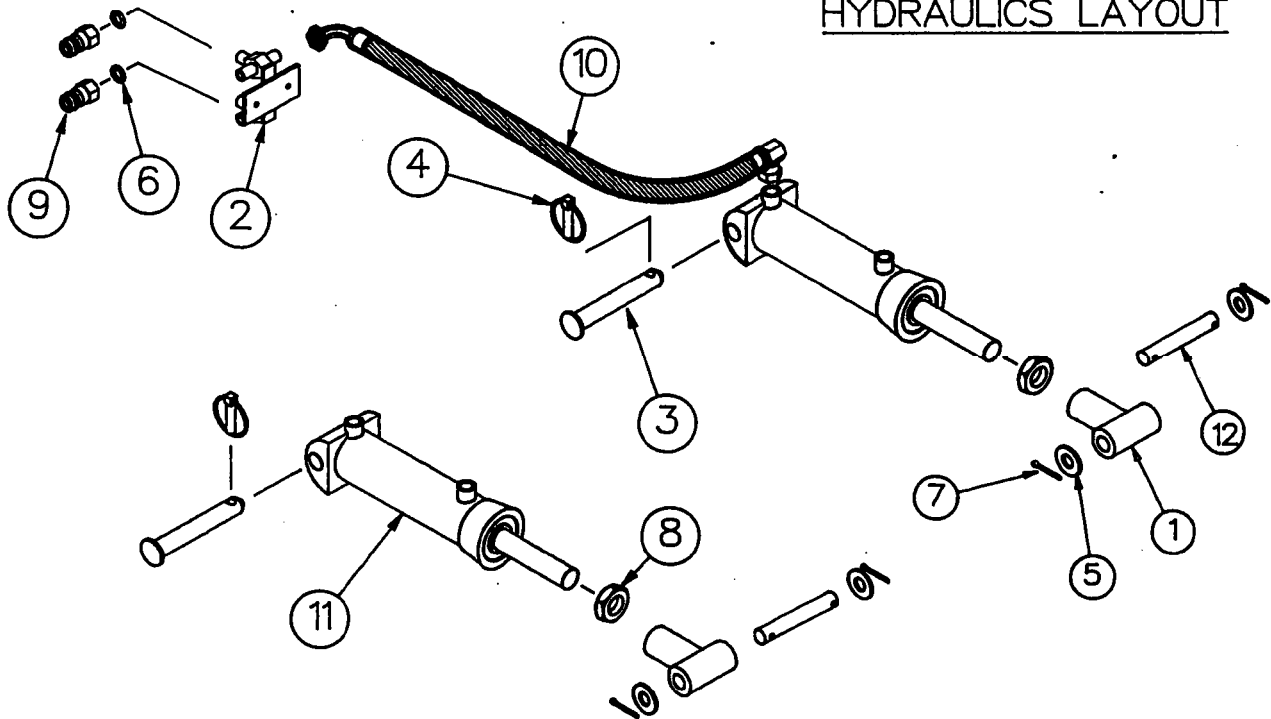
## 2 BALE TWIN RAM SUPER BUZZARD



No.	Part No.	Description	Qty
1	13440	CENTRE BEARING SUPPORT	10
2	13441	CENTRE BEARING	10
3	13442	PUSHER BAR	4
4	13918	BUSH	20
5	51673	PIN	1
6	51918	LEG	1
7	51986	MAIN FRAME	1
8	52445	CLAW UNIT	10
9	70011	M10 NYLOCK NUT	2
10	70012	M12 NYLOCK NUT	20
11	70024	M10 SETSCREW	2
12	70026	M12 SETSCREW	20
13	70033	LINCH PIN	1
14	70058	M10 SETSCREW	20
15	70136	M12 WASHER	40

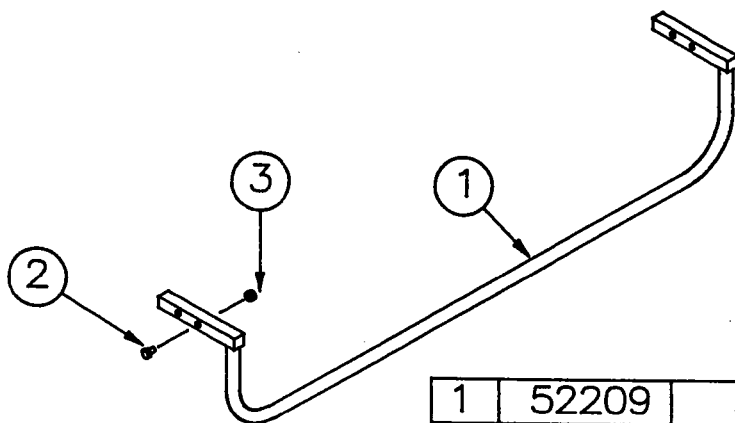
## 2 BALE TWIN RAM SUPER BUZZARD

### HYDRAULICS LAYOUT



No.	Part No.	Description	Qty
1	52546	TEE PIECE	2
2	50925	HYD. TEE PIECE	1
3	51354	PIN	2
4	70033	LINCH PIN	2
5	70073	M20 WASHER	4
6	70122	DOWTY SEAL	2
7	70133	COTTER PIN	4
8	70138	UNF 7/8 NUT	2
9	70376	Q/R PROBE	2
10	71033	HOSE	4
11	71460	RAM	1
12	15365	PIN	2

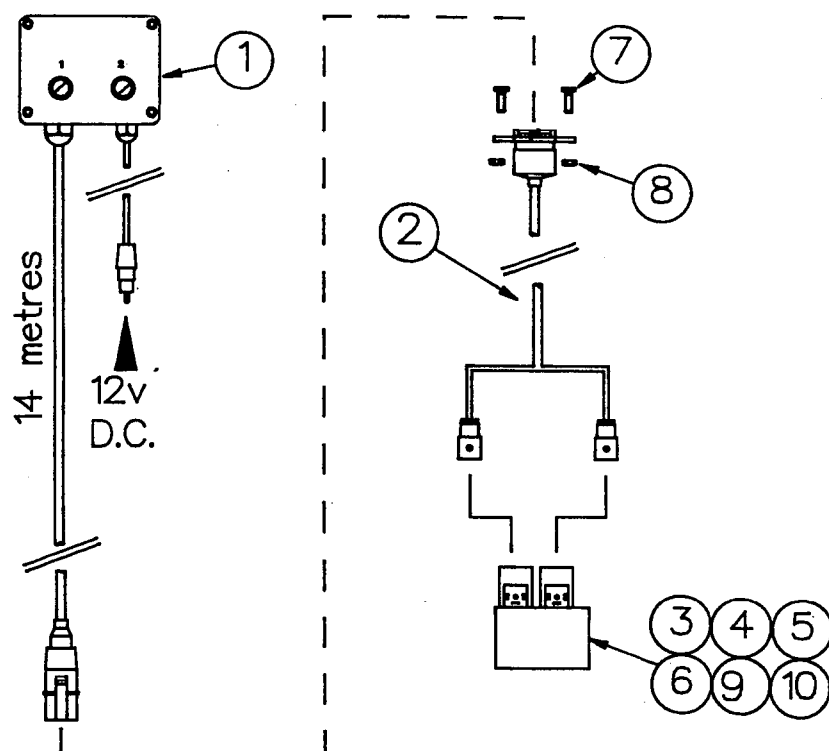
### 52174 GUIDE RAIL KIT FOR 2 BALE BUZZARD



1	52209	SIDE RAIL	1
2	71252	M20 BOLT	2
3	70412	M20 NYLOCK NUT	2

## 2 BALE TWIN RAM SUPER BUZZARD

### 52443 2-ram SOLENOID DIVERTER VALVE KIT

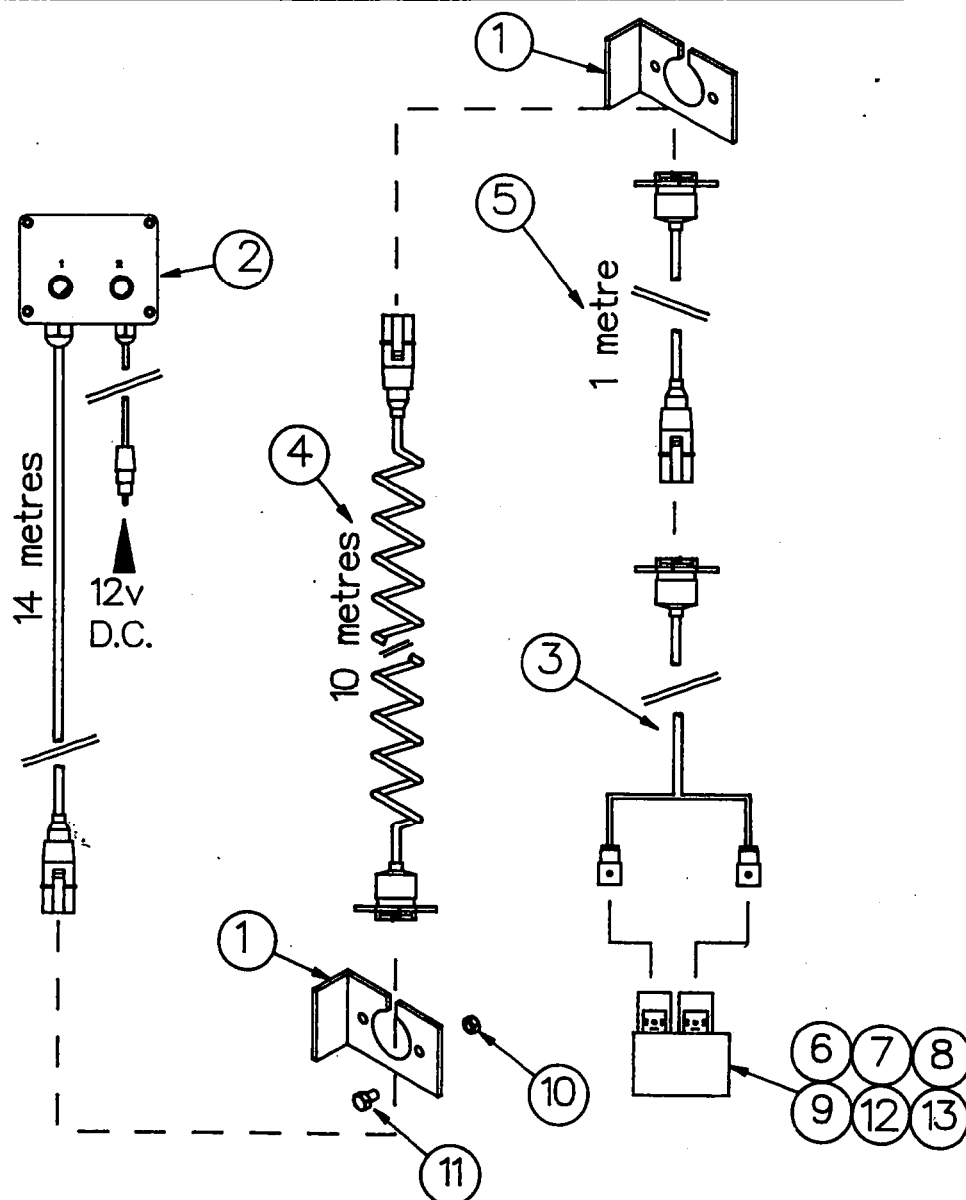


No.	Part No.	Description	Qty
1	52276	CAB BOX	1
2	52277	CABLE	1
3	70011	M10 NYLOCK NUT	2
4	70121	DOWTY SEAL	6
5	70124	ADAPTOR	6
6	70236	M10 WASHER	2
7	70238	M8 NYLOCK NUT	2
8	70274	M8 SETSCREW	2
9	71032	VALVE	1
10	71259	M10 BOLT	2



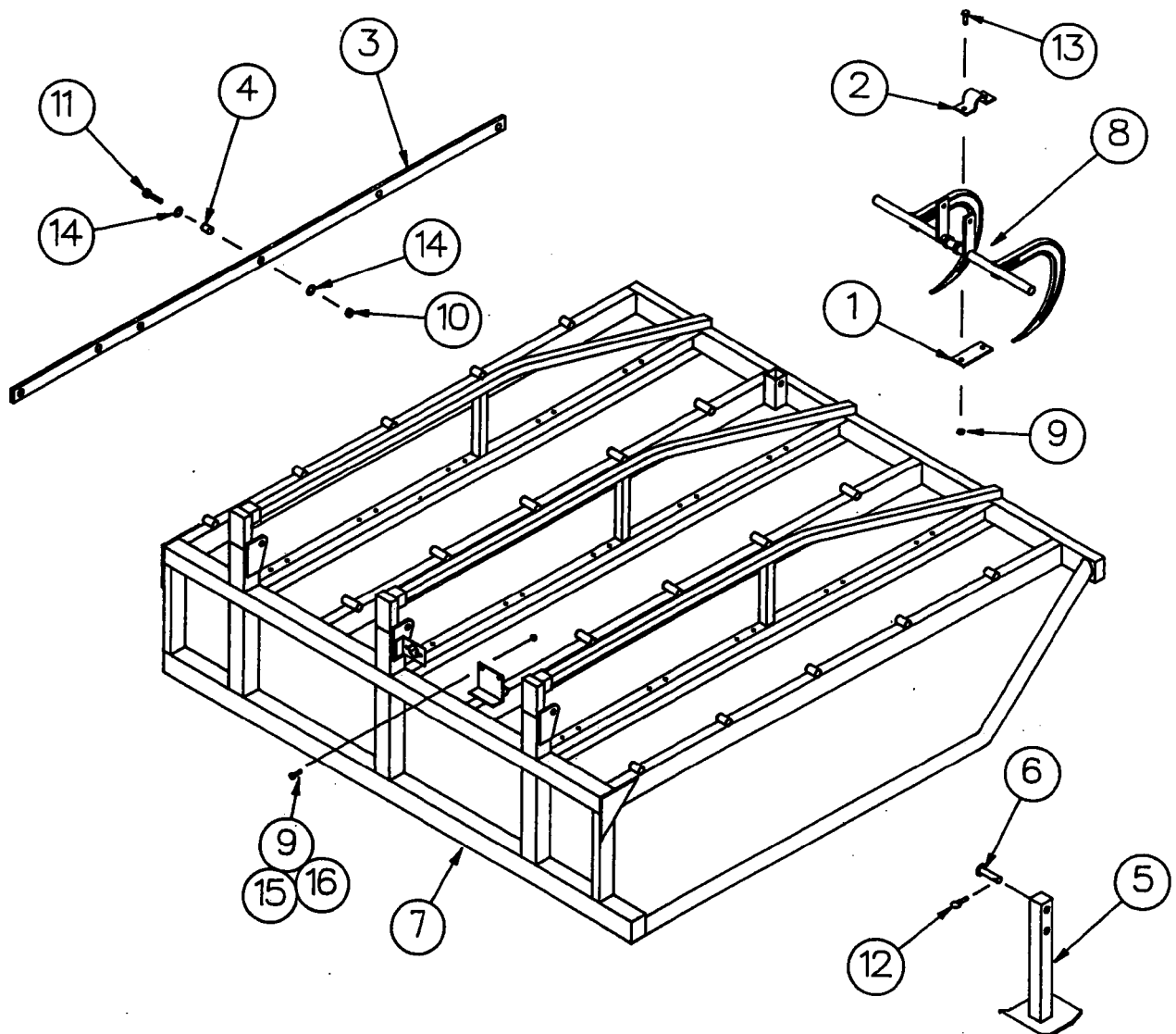
## 2 BALE TWIN RAM SUPER BUZZARD

52524 2-ram SOLENOID KIT c/w ELECTRICAL SUZIE



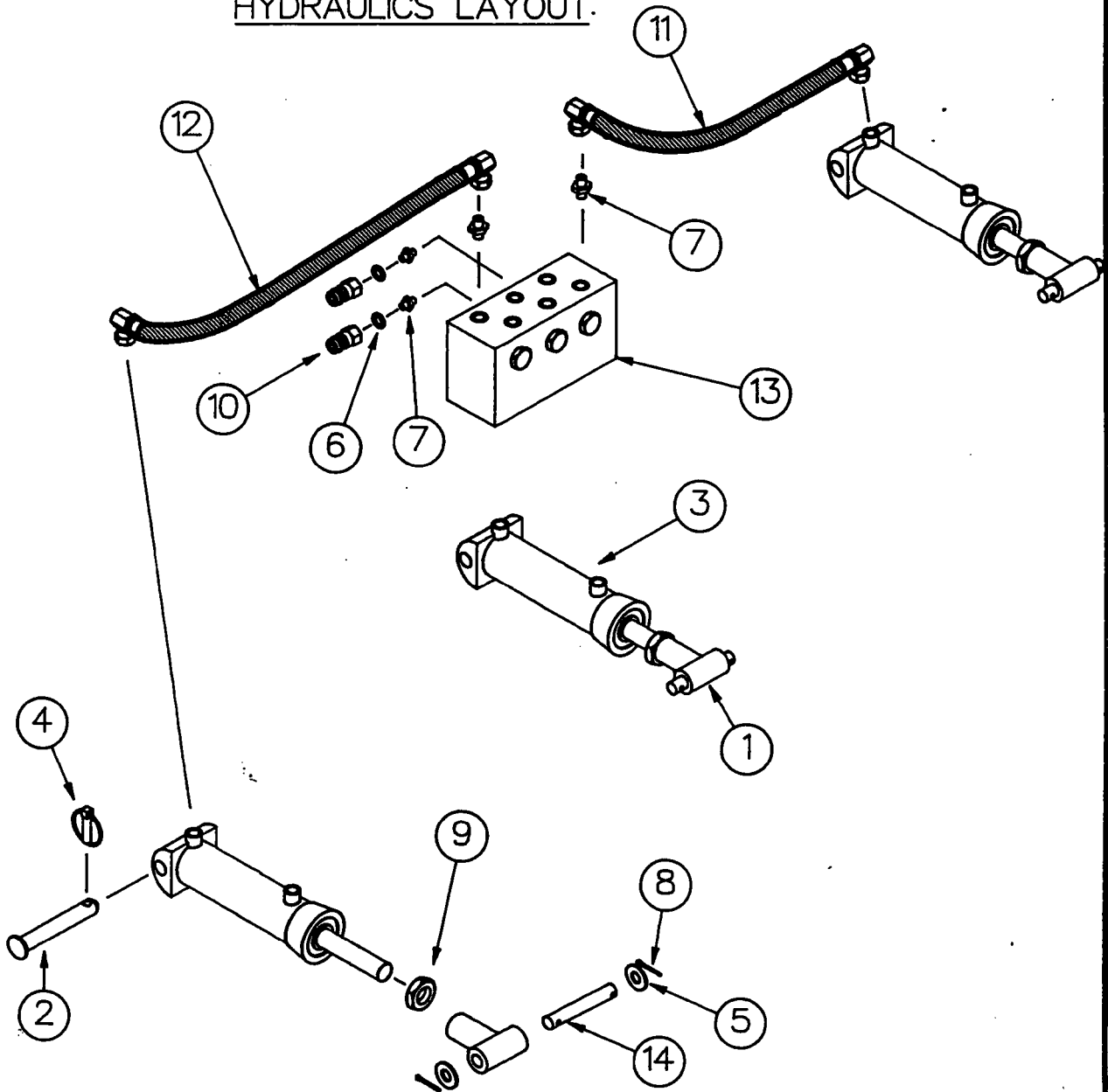
No.	Part No.	Description	Qty
1	14538	BULKHEAD BRACKET	2
2	52276	CAB BOX	1
3	52277	CABLE	1
4	52315	SUZIE LEAD ASSEMBLY	1
5	52316	SUZIE TO BUZZARD LEAD	1
6	70011	M10 NYLOCK NUT	2
7	70121	DOWTY SEAL	6
8	70124	ADAPTOR	6
9	70236	M10 WASHER	2
10	70238	M8 NYLOCK NUT	6
11	70274	M8 SETSCREW	6
12	71032	VALVE	1
13	71259	M10 BOLT	2

### 3 BALE TRIPLE RAM SUPER BUZZARD



No.	Part No.	Description	Qty
1	13440	CENTRE BEARING SUPPORT	15
2	13441	CENTRE BEARING	15
3	13442	PUSHER BAR	6
4	13918	BUSH	30
5	51523	LEG	1
6	51673	PIN	1
7	52087	MAIN FRAME	1
8	52445	CLAW UNIT	15
9	70011	M10 NYLOCK NUT	32
10	70012	M12 NYLOCK NUT	30
11	70026	M12 SETSCREW	30
12	70033	LINCH PIN	1
13	70058	M10 SETSCREW	30
14	70136	M12 WASHER	60
15	70236	M10 WASHER	2
16	71259	M10 BOLT	2

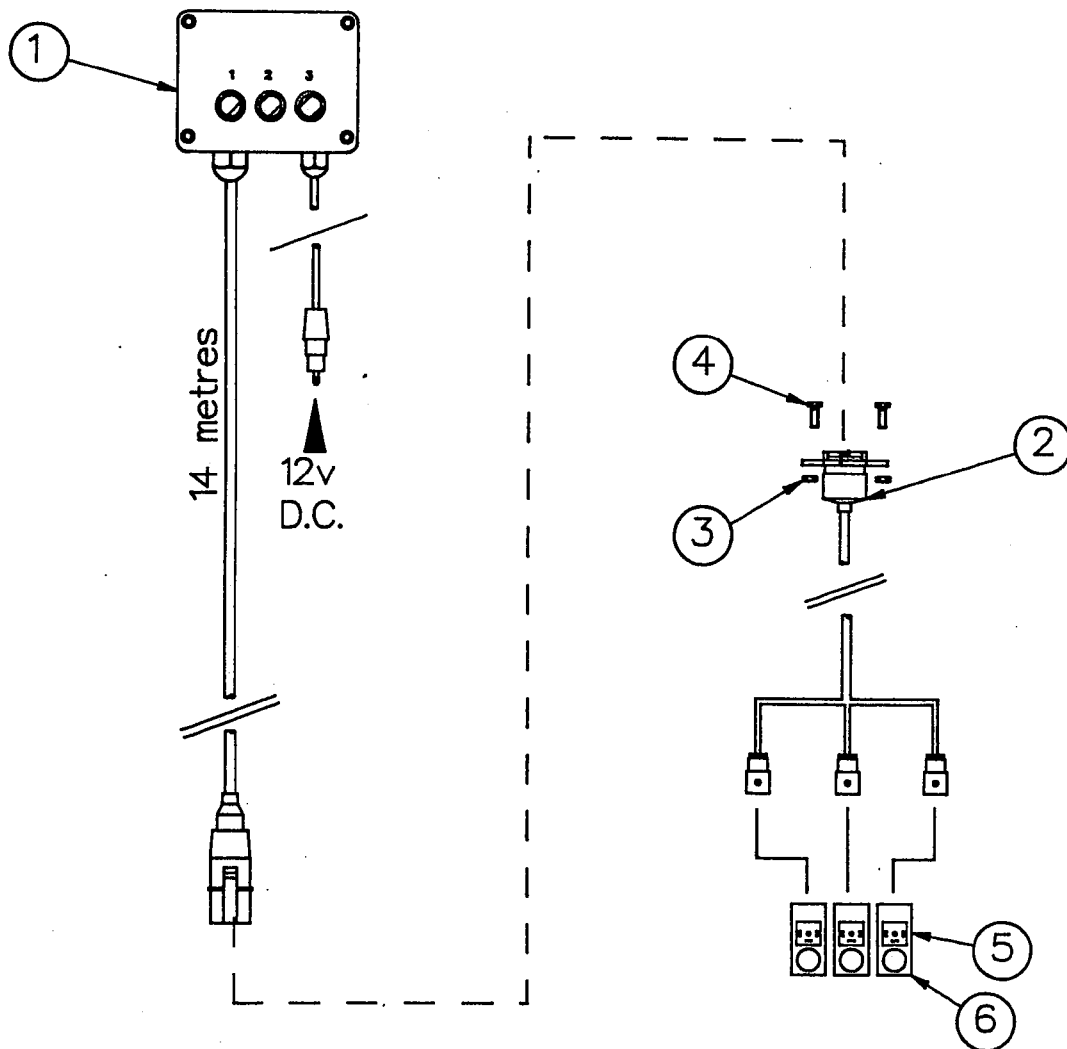
## HYDRAULICS LAYOUT.



No.	Part No.	Description	Qty
1	52546	TEE PIECE	3
2	51354	PIN	3
3	51957	RAM 71460	3
4	70033	LINCH PIN	3
5	70073	M20 WASHER	6
6	70122	DOWTY SEAL	10
7	70124	ADAPTOR	8
8	70133	COTTER PIN	6
9	70138	UNF 7/8 NUT	3
10	70376	Q/R PROBE	2
11	71033	HOSE (0.5m)	4
12	71233	HOSE (1.3m)	2
13	71365	THREE RAM BLOCK	1
14	15365	PIN	3

### 3 BALE TRIPLE RAM SUPER BUZZARD

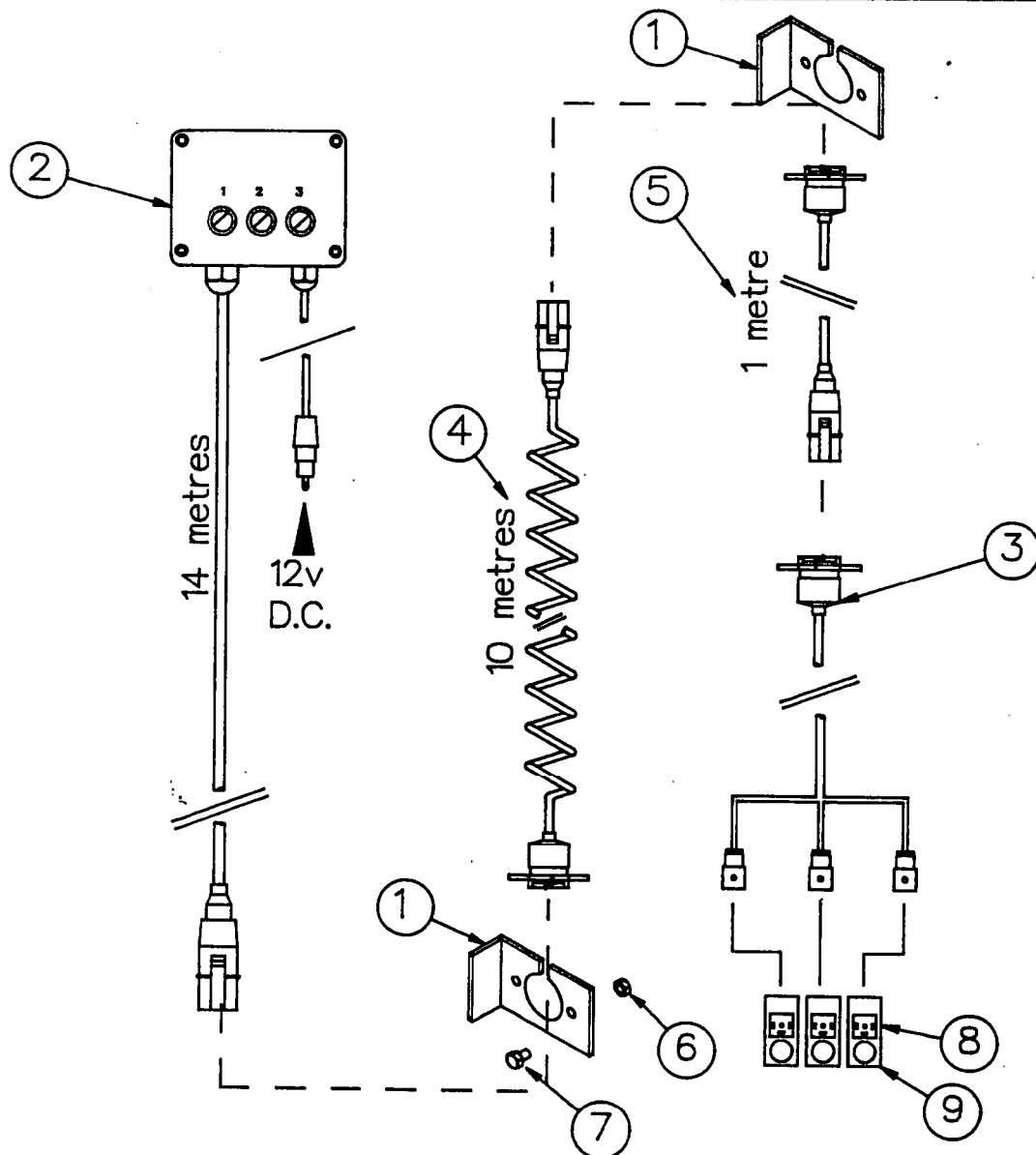
#### 52448 3-ram SOLENOID DIVERter VALVE KIT



No.	Part No.	Description	Qty
1	52090	CAB BOX	1
2	52127	CABLE	1
3	70238	M8 NYLOCK NUT	2
4	70274	M8 SETSCREW	2
5	91155	VALVE SOLENOID	3
6	91156	VALVE SPOOL	3

### 3 BALE TRIPLE RAM SUPER BUZZARD

52525 3-ram SOLENOID KIT c/w ELECTRICAL SUZIE



No.	Part No.	Description	Qty
1	14538	BULKHEAD BRACKET	2
2	52090	CAB BOX	1
3	52127	CABLE	1
4	52315	SUZIE LEAD ASSEMBLY	1
5	52316	SUZIE TO BUZZARD LEAD	1
6	70238	M8 NYLOCK NUT	6
7	70274	M8 SETSCREW	6
8	91155	VALVE SOLENOID	3
9	91156	VALVE SPOOL	3

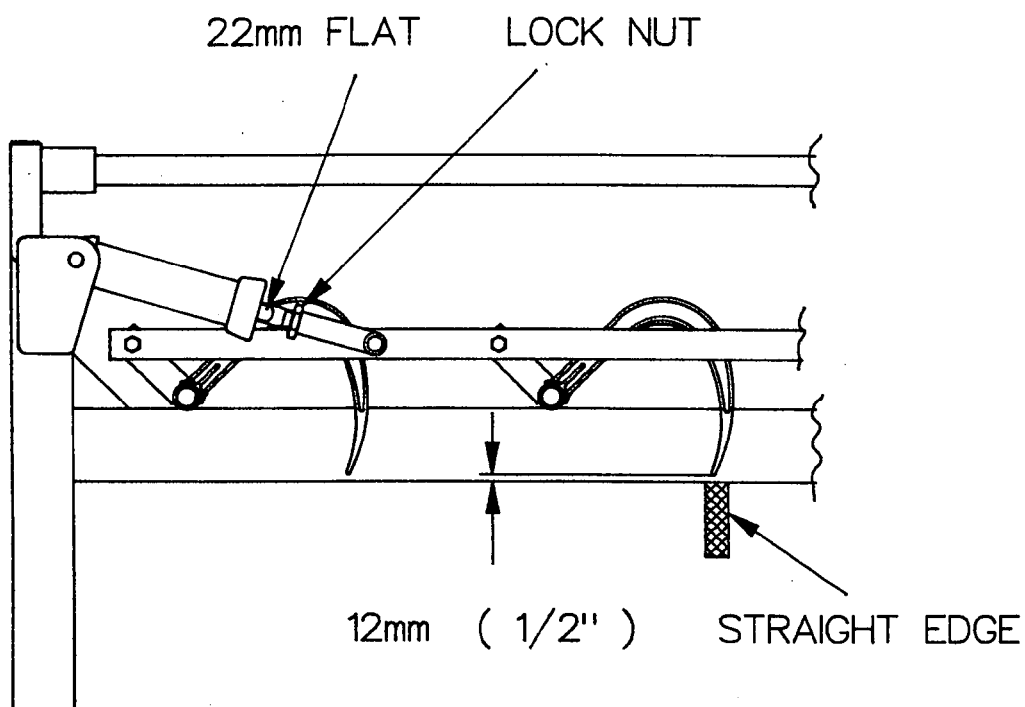
## IMPORTANT

### \*\*\* CHECK CLAW ADJUSTMENT \*\*\*

- Fully retract claw ram(s).
- Place a straight edge under frame as shown and check clearance.
- To adjust clearance, release lock nut, turning ram rod by flats provided in the appropriate direction to give the correct measurement shown. Tighten lock nut.
- On the two and three bale Super Buzzards both rams must be checked independently.

### \*\*\* NOTE \*\*\*

ON NO ACCOUNT MUST THE CLAWS PROJECT BELOW THE FRAME WHEN THE CLAW RAM(S) ARE FULLY RETRACTED, OR CLAW DAMAGE MAY RESULT.



## WARNINGS

- Allow only qualified persons to operate the loader.
- Never allow anyone on the loader and/or the attachment when in operation.
- Always operate the tractor at reduced speed when making turns.
- Always allow for added length of loader when making turns.
- In transit, keep the loader in the lowest position possible.
- Exercise extreme caution on inclines, irregular or uneven ground.
- Avoid lowering a heavy load and stopping suddenly.
- Do not walk or work under a raised load or attachment.
- Never leave the loader or attachment in the raised position unattended.
- Ensure that the claw ram is fully retracted after each operation to eliminate damage to the claws.
- Check tightness of all bolts periodically. Oil all moving parts regularly.
- Do not leave ram extended when not in use as this can cause damage to the rods.
- Do not use the SUPER BUZZARD frame as a crane jib.

**NOTE: Extra supports, not supplied by Brown's, may be required when welding Quick Detach brackets to the SUPER BUZZARD rear frame. Also make sure both box sections are tied together using heavy plate.**



## **EC DECLARATION OF CONFORMITY**

**Manufacturer :** Browns Agricultural Machinery Co. Ltd.

**Description of Machinery :** SUPER BUZZARD 2 Bale Grab

**Model Number :** 65250

**This machine complies with EC Directives, Transposed Harmonised Standards, National Standards and Technical Specifications as follows:**

**89/392/EEC 91/386/EEC 93/44/EEC 93/68/EEC EN 292 pr EN 691**

**The machinery has been designed taking into account the essential Health & Safety Standards as detailed in the Supply of Machinery (Safety Regulations) 1992.**

**For and on behalf of the Manufacturer**

**Name :** J. W. G. BROWN

**Status :** MANAGING DIRECTOR

**The above machinery taking into account the state of art, complies with or is designed and constructed so far as possible, to comply with the relevant Health & Safety requirements as indicated in the Technical file.**

**THE COMPANY IS CONTINUALLY STRIVING TO IMPROVE ITS PRODUCTS AND RESERVES THE RIGHT TO MAKE IMPROVEMENTS OR CHANGES WITHOUT INCURRING ANY OBLIGATION TO ALTER ANY OF ITS MACHINES PREVIOUSLY SOLD.**