



# BROWNS

EST: 1830

Agricultural Machinery Co. Ltd

Manufacturers of Farm Implements & Machinery



## SPORTS MASTER

SPRING TINE GRASS HARROWS

Owners Illustrated Instruction Book & Parts List

Grovebury Road, Leighton Buzzard, Bedfordshire. LU7 4UX. UK.

Tel: 01525 375157. Fax: 01525 385222.

Email: [enquires@brownsagricultural.co.uk](mailto:enquires@brownsagricultural.co.uk)

[www.brownsagricultural.co.uk](http://www.brownsagricultural.co.uk)



## Contents

EC declaration of conformity

Machine Identification

1.0 Introduction

1.1 General Information

2.0 Safety notes and warnings

2.1 Machine decals

2.2 Delivery

3.0 Intended use

4.0 Operating instructions

5.0 Storage

6.0 Parts lists

7.0 Dismantling & disposal

8.0 Warranty Guidelines

8.1 Modifications

# EC Declaration of Conformity

Browns Agricultural Machinery Co Ltd declare that the **Browns Sports Master grass harrow**, as defined by the Serial Number attached to the machine, conforms with the following Directives and Regulations, and has been certified accordingly.

**EC Machinery Directive 2006/42/EC.**  
**The Supply of Machinery (Safety) Regulations 2008.**  
**The Provision and Use of Work Equipment Regulations 1998.**

Specifically related harmonised standards are:

**EN ISO 12100-1: 2003 (Safety of Machinery).**  
**EN ISO 12100-2: 2003 (Safety of Machinery).**  
**EN ISO 4254-1 : 2005 (Agricultural machinery - Safety).**

## THE MANUFACTURER:

Browns Agricultural Machinery Co. Ltd.  
Grovebury Road,  
Leighton Buzzard,  
Bedfordshire. LU7 4UX.

Telephone (+44) 0 1525 375157

Person empowered to draw up the declaration on behalf of the manufacturer of his authorized representative

Name: David Hanson

Signature:



Job Title: Design & Safety  
Place of declaration: LU7 4UX

Employer: Browns Agricultural Machinery  
Date of declaration: 1st January 2023

## Machine Identification

Enter the relevant data in the following list upon acceptance of the machine.

Serial Number	
Type of Machine	Sports Master Tined Harrow
Machine Width	5m
Year of Construction	
Delivery Date	
First Operation	
Dealer Name	
Dealer Address	

## 1.0 Introduction

Congratulations on your purchase of a new Browns machine. In order to correctly use the machine please carefully read this manual. The manual has been written to provide operating and maintenance procedures and related safety information which will allow you to use and maintain this machine in a correct and safe manner.

This operators manual should be regarded as part of the machine. You must ensure that you and anyone else who is operating, maintaining or working with the machine be familiar with the operating and maintenance procedures and related safety information contained in this manual.

Owners must give operating instructions to operators or employees before allowing them to operate this machine. It is the operators responsibility to read and understand all safety and operating instructions in this manual. Remember all accidents can be avoided.

A person who has not read and understood all operating and safety instructions is not qualified to operate the machine. An untrained operator exposes themselves and bystanders to possible serious injury or death.



### Caution

This symbol indicates important safety messages in this manual. When you see this symbol, be alert to the possibility of injury to yourself or others, and carefully read the message that follows.

**The most important safety device on the machine is a  
safe operator**

## 1.1 General Information

The illustrations and data used in this manual were current at the time of printing, but due to possible engineering or production changes, this product may vary slightly in detail. Browns reserves the right to redesign or change components as may be necessary without notification to anyone.

No liability can be accepted for inaccuracies or omissions in this manual, although every possible care has been taken to make it as complete and accurate as possible.

Throughout this manual, references may be made to,

- **LEFT-HAND SIDE** - the side which is on the left only when an observer is facing in the normal forward direction of travel of the machine, i.e. the operator looking forward from rear of machine.
- **RIGHT-HAND SIDE** - the side which is on the right only when an observer is facing in the normal forward direction of travel of the machine.
- **COMPETENT PERSON** - for any task means a person who has acquired through training, qualifications or experience, or a combination of them, the knowledge and skills to carry out that task.

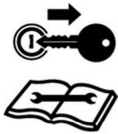
## 2.0 Safety Notes & Warnings



Only competent and trained operators should use and maintain the machine. Ensure this manual has been read by every person who is intending to use or maintain it.



Be aware of moving parts on the machine that may cause a crushing hazard to the hands and body.



Study operator manual thoroughly before maintenance is carried out and always turn the tractor off and remove key.



Take care that no persons are within the machines hazardous area during the folding and unfolding procedure.



High pressure fluid hazard. Escaping oil under pressure can penetrate the skin causing serious injury. Avoid the hazard by relieving pressure before disconnecting hydraulic pipes. Search for leaks with a piece of cardboard.



Do not allow any person to stand inbetween the machine and the tractor unless the machine is lowered to the ground and the tractor is turned off with the key removed



Manual handling hazard. Perform a manual handling assessment before assembling the machine, seek assistance or lifting equipment as required.



Never allow any person to ride on the machine or the tractor ( unless there is a passenger seat provided ).



Ensure that the tractor is of sufficient size to provide adequate stability when in operation, refer to the tractors operator manual when operating on sloping ground.

## 2.1 Machine Decals

The decals should be considered part of the machine. Any decal that refers to warnings or hazards must be replaced immediately if it become lost or illegible.



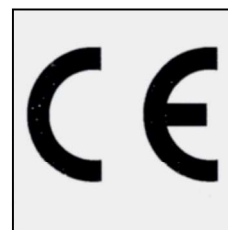
Part No.  
80004



Part No.  
80003



Part No.  
80002



Part No.  
80076



Part No.  
80020



Serial number required  
before a duplicate can  
be issued

## 3.2 Delivery

The machine is delivered fully assembled. Only a competent driver should attempt to unload the machine with knowledge of slinging and lifting. A forklift or loader with sufficient lifting capacity should be used, check the technical specifications for the specific model to find the machine weight before any lifting takes place. Place the machine onto a firm flat surface and check all support wheels and parking leg is secure before decoupling the machine.

Once unloaded check over the machine for any transport damage to hydraulic hoses or the frame.



### 3.0 Intended use

The Sports Master is a very strong folding spring tined harrow. It is used for removing dead organic matter as well as thatch. The tine's angle can be adjusted based on whether you need a light comb or aggressive harrow.

### 4.0 Operating instructions

Carefully reverse the tractor and align the lower link arms with the harrow. Turn off the tractor, remove key and apply the parking brake, attach the top linkage turn-buckle and the hydraulic hoses if it is a hydraulic folding model. Lift the machine off the ground slightly.

For hydraulic models pressurise the rams and ensure they are retracted fully. On all models lift the stand legs up.



Before lowering the arms, check there is sufficient room and that there is nobody in the danger zone where they could be struck by the arms or trapped in the hinge areas.

Adjust the machine to the required setting for your conditions. The more vertical the tine, the more aggressive it will be on the sward. Adjust the top linkage so the harrow is parallel to the ground.

On the manual folding harrow, remove the turnbuckle pin, manually lower the wings using the handle. Attach the turnbuckles into the upper hole on the wing stand and adjust the to lock the wings horizontally.

Operating speeds will vary dependant on the condition of the sward and the comfort of the operator. When the harrow is set correctly and at an optimum forward speed, the tines will oscillate vigorously from side to side. The recommended speed for operation is between 6 to 12 km/h ( 3.5 to 7.5 mph )



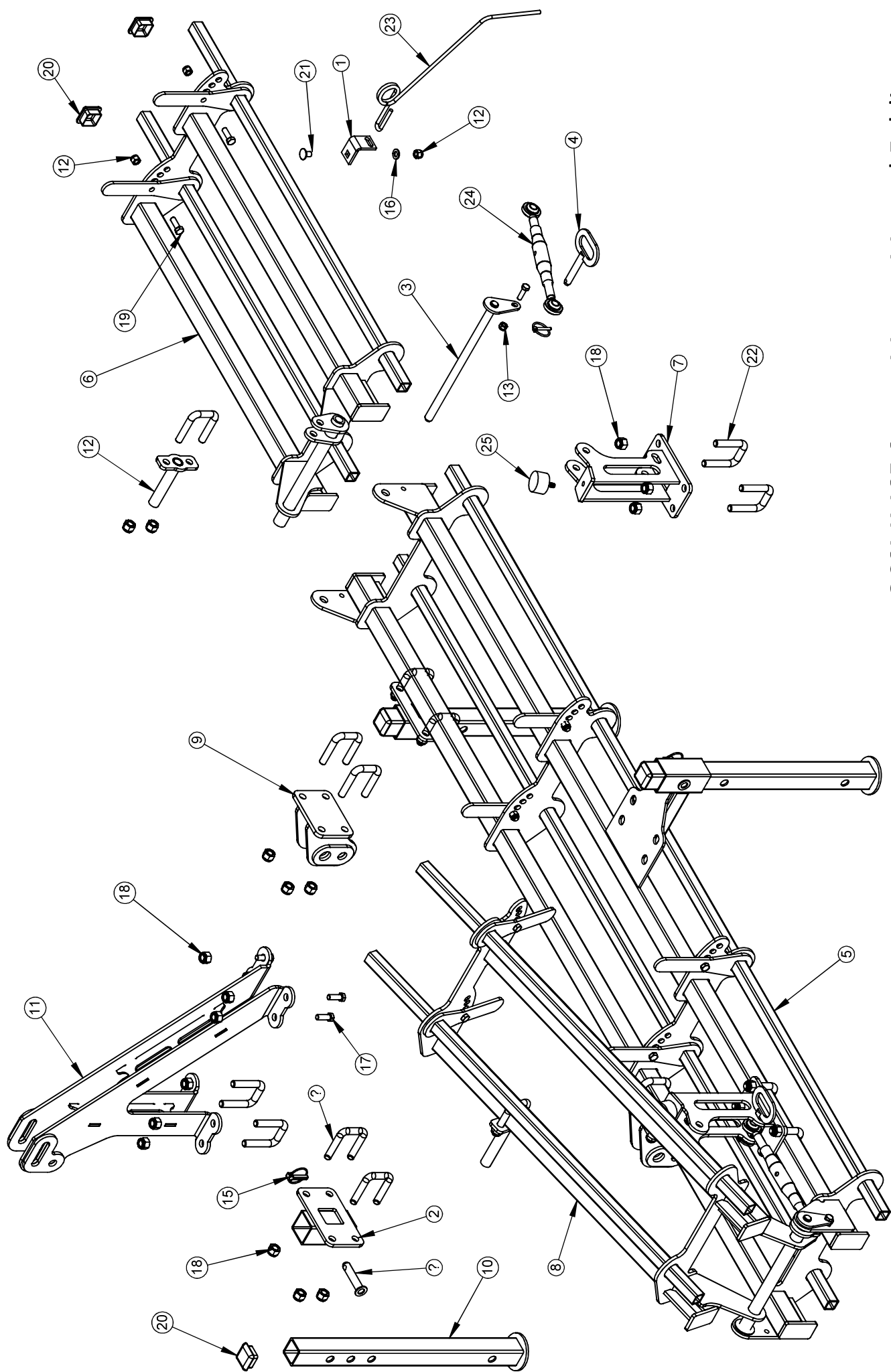
Always lift the harrow clear of the ground when turning on headlands and never reverse with the tines are in contact with the ground or this could result in tine breakage or machine damage.

When travelling on public roads ensure that the harrow has been fully folded. Make sure you are familiar with the width of the harrow and check if the rear tractor lights are still clearly seen from the rear of the machine.

### 5.0 Storage

- Store the unit undercover if possible.
- Thoroughly clean and grease the unit before storage to ensure it is in full operating condition when next required.
- Store the unit in an area away from human activity.
- Do not allow children to play on or around the stored unit.
- Make sure all parked machines are on a hard, level surface and engage all safety devices, parking stands or stay bars if provided.
- If blocking is used, make sure it is solid and secure before leaving area.



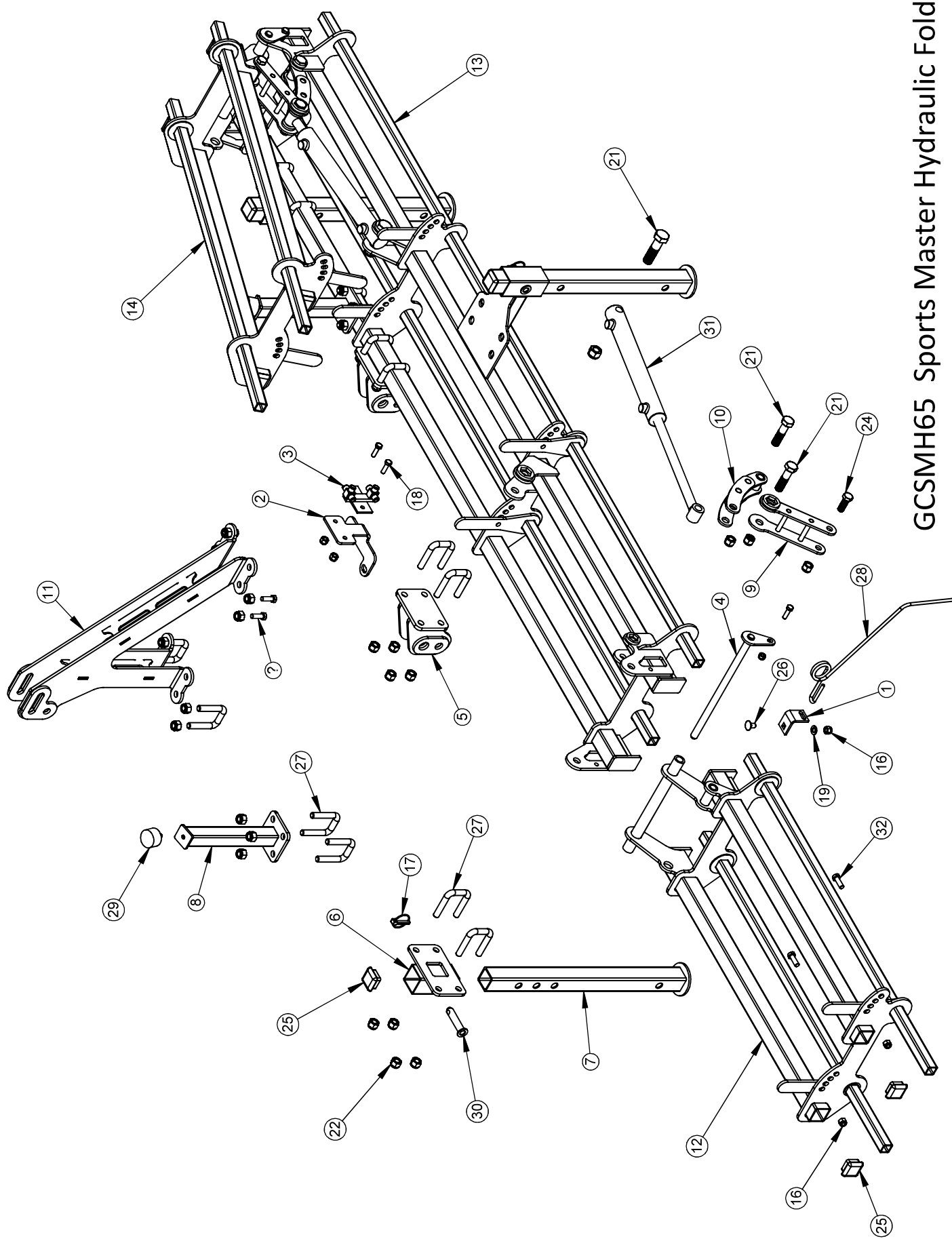


GCSMM65 Sports Master Manual Folding

## GCSMM65 Sports Master Manual Folding

1	16358	TINE HOLDER	96
2	50972	LEG SOCKET	2
3	56023	HINGE PIN	2
4	56028	LOCK PIN	2
5	56065	MANUAL MAIN FRAME	1
6	56067	MANUAL WING RIGHT	1
7	56068	WING REST	2
8	59066	MANUAL WING LEFT	1
9	59070	LOWER LINKAGE	2
10	59074	LEG	3
11	59081	TOP LINKAGE	1
12	59085	WING HANDLE	2
13	70011	M10 NYLOCK NUT	4
14	70012	M12 NYLOCK NUT	104
15	70033	LINCH PIN	5
16	70136	M12 WASHER	104
17	70242	M16 x 40 SETSCREW (8.8)	4
18	70342	M16 NYLOCK NUT	36
19	70440	M12 x 35 SETSCREW (8.8)	8
20	71621	PLASTIC CAP	7
21	71647	M12 x 60 CUP SQ BOLT (8.8)	98
22	71655	M16 U BOLT 50	16
23	71663	TINE 8mm	98
24	71677	TOP LINK S.4418	2
25	71741	RUBBER BUFFER	2
26	71969	LEG PIN	3

Specifications	
Transport Width	2.5 m
Working Width	5.0 m
Weight	180 kg
HP Reqs.	35 to 60 HP



GCSMH65 Sports Master Hydraulic Folding

### GCSMH65 Sports Master Hydraulic Folding

1	16358	TINE HOLDER	96
2	18151	TEE BRACKET	1
3	50925	T PIECE	1
6	50972	LEG SOCKET	2
4	56023	HINGE PIN	2
5	59070	LOWER LINKAGE	2
7	59074	LEG	3
8	59076	WING STAND	2
9	59077	HINGE LINK WIDE	2
10	59078	HINGE LINK	2
11	59081	TOP LINKAGE	1
12	59082	HYDRAULIC WING LEFT	1
13	59083	MAINFRAME	1
14	59084	HYDRAULIC WING RIGHT	1
15	70011	M10 NYLOCK NUT	4
16	70012	M12 NYLOCK NUT	104
17	70033	LINCH PIN	3
18	70058	M10 x 30 SETSCREW (8.8)	4
19	70136	M12 WASHER	104
20	70242	M16 x 40 SETSCREW (8.8)	4
21	70320	M20 x 110 BOLT (8.8)	6
22	70342	M16 NYLOCK NUT	34
23	70412	M20 NYLOCK NUT	6
32	70440	M12 x 35 SETSCREW (8.8)	8
24	71262	M16 x 110 BOLT (8.8)	2
25	71621	PLASTIC CAP	7
26	71647	M12 x 60 CUP SQ BOLT (8.8)	98
27	71655	M16 U BOLT 50	14
28	71663	TINE 8mm	98
29	71741	RUBBER BUFFER	2
30	71969	LEG PIN	3
31	73085	RAM 40 x 25 x 300	2

32	70121	DOWTY SEAL 1/2"	2
33	70124	ADAPTOR BSP 3/8m x 3/8m	2
34	70342	DOWTY SEAL 3/8"	4
35	70364	Q/R PROBE 1/2"	2
36	71033	HOSE 3/8" x 0.6m	2
37	71361	HOSE 3/8" x 2.2m	2

Specifications	
Transport Width	2.5 m
Working Width	5.0 m
Weight	200 kg
HP Reqs.	35 to 60 HP

## 7.0 Dismantling & disposal

When the machine has come to the end of its useful life it should be dismantled and disposed of in a safe and environmentally friendly manner.

It is very important not to leave the machine in a state that could be dangerous for people or the environment.

Waste oil must be collected and disposed of in accordance with local regulations.

Never pour used oil into drains or onto the floor.

Worn tyres and rubber parts must be disposed of by a licensed waste disposal company.



Protect the environment and ensure contaminated parts or waste oil are always disposed of or cleaned in safe and environmentally friendly manner.

## 8.0 Warranty Guidelines

The period of liability for warranty relating to our products is 12 months. The warranty period shall become effective upon installation of the machine with the end user. All wearing parts are excluded from the warranty.

Warranty will only be given if the machine has been used for the purpose indicated in this manual and the original specification of the machine has not been subject to unauthorised modification.

All warranty claims must be submitted the Browns via the dealership you purchase the machine from.

All warranty work must be carried out by authorised Browns dealers using original parts.

### 8.1 Modifications

Your Browns machine should not be modified or altered unless officially authorised by Browns. Any modifications will make the machine out of warranty and will make the declaration of conformity for the machine void.

However, if it is necessary to carry out modifications, then all modifications must be done by a competent person, based on a risk assessment. It is important to emphasise that the competent person who undertakes the modification assumes the role of the designer and manufacturer. All safety features must be retained in the modified machine.



Safety instructions must be reviewed after all modifications are carried out and revised where necessary.