



BROWNS

EST: 1830

Agricultural Machinery Co. Ltd

Manufacturers of Farm Implements & Machinery

COMPACTOR B

BALE ACCUMULATOR

Owners Illustrated Instruction Book & Parts List

Grovebury Road, Leighton Buzzard, Bedfordshire. LU7 4UX. UK.

Tel:01525 375157. Fax:01525 385222.

Email:info@brownsagricultural.co.uk

INTRODUCTION

The Compactor 'B' Bale Accumulator is a box section steel framework mounted upon three wheels. When towed behind a pick-up baler it will receive bales, arrange them, and leave eight bales in a block on the ground ready to be picked up by a Buzzard Bale Loader. The operation of the Compactor 'B' is completely automatic and relies upon the forward movement of the baler to operate the three spring loaded deflector gates which position the bales. The seventh and eighth bales operate the trip mechanism for releasing the tailgate. When the eight bales have been released through the tailgate, it will automatically latch for the next cycle.

NOTE: ALL REFERENCE TO LEFT AND RIGHT HAND ARE TAKEN FROM THE REAR OF THE MACHINE LOOKING FORWARD.

WARNINGS

DO NOT ALLOW ANYONE TO RIDE ON THE MACHINE EITHER ON THE ROAD OR IN THE FIELD.

LUBRICATE ALL MOVING PARTS REGULARLY.

CHECK TIGHTNESS OF ALL BOLTS AND NUTS PERIODICALLY.

NEVER REVERSE THE MACHINE WITH BALES IN AS THIS MAY DAMAGE THE DEFLECTOR GATE MECHANISMS.

TYRE PRESSURE:	NORMAL CONDITIONS	15 - 18 lbs./sq. in.
	HARD GROUND	12 - 15 lbs/sq. in.

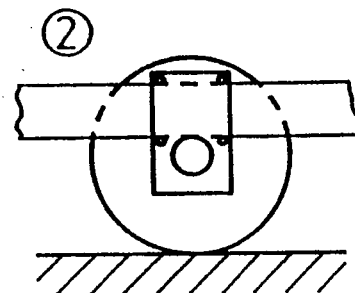
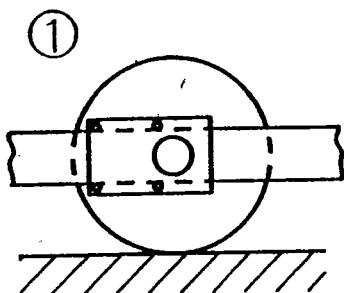
WHEEL POSITIONS

The wheels on the Compactor 'B' have two working positions: (field conditions may affect this)

For hay set at Position 1

For straw set at Position 2

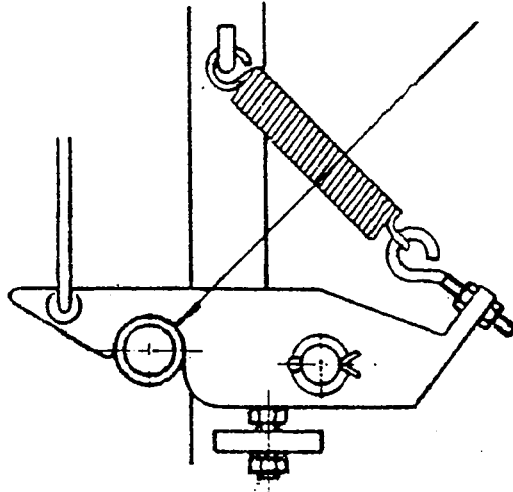
This is done by removing the four bolts in the axle plate and rotating through 90°.



ADJUSTMENTS

Ensure that all moving parts i.e. gates, deflectors and trips etc. move freely. Lubricate with oil regularly.

Each tailgate latch must be adjusted as necessary to give full engagement over the tailgate bar.



Spring tension on the deflector gates and the tailgate latches may be adjusted to suit local conditions, this also applies to the height of the wheels and deflectors.

BALER ADJUSTMENTS

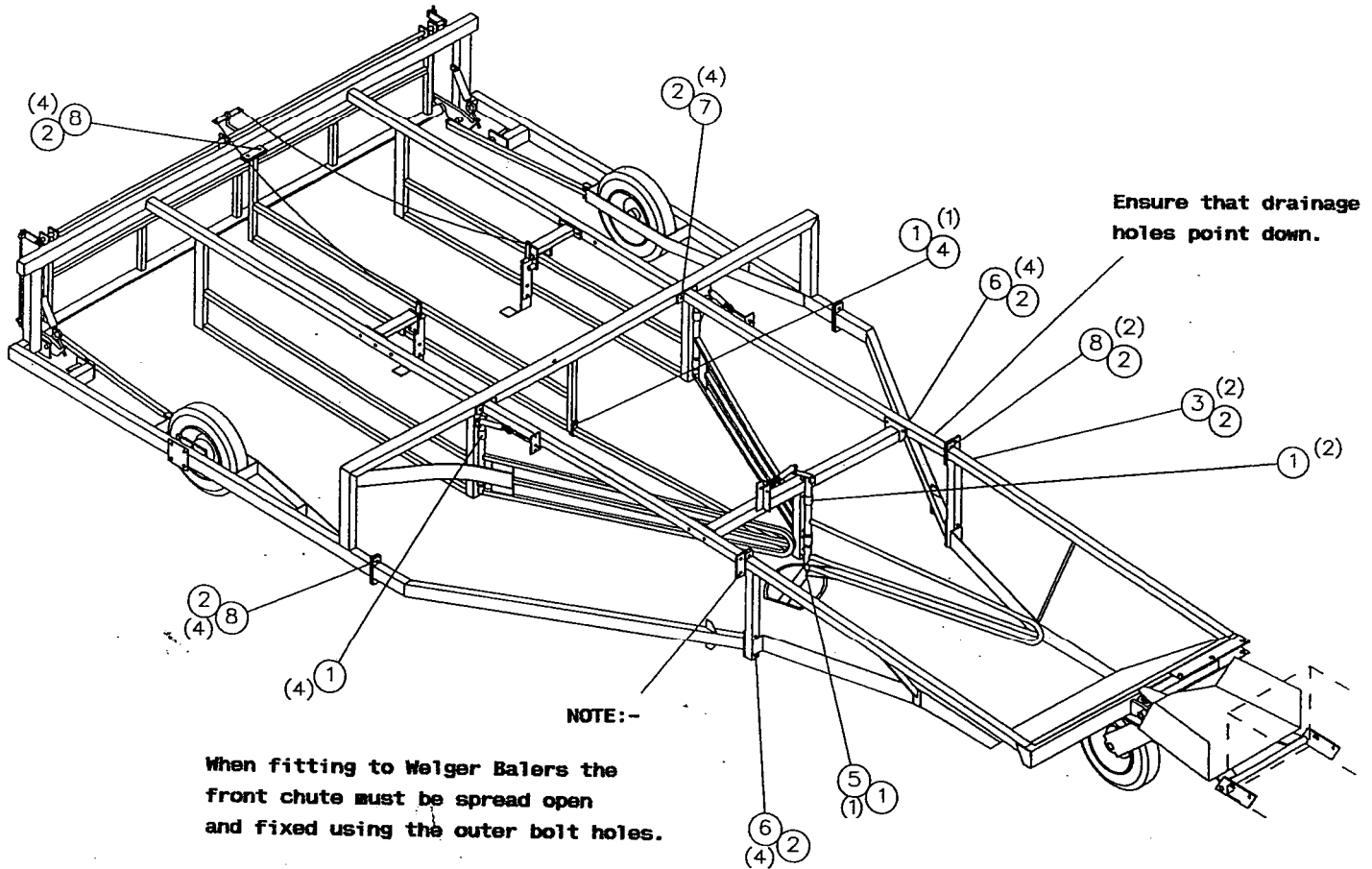
As with all mechanical bale handling equipment, firm, tight, properly cut bales will give the best results.

To this end we suggest you follow the Service Instructions in your baler Instruction Book.

TRANSPORT POSITION

The machine is supplied with a two position swinging towing bracket which inset, gives a working position and outset, a transport position enabling the machine to be towed directly behind the baler, thus cutting down on the road width.

PARTS TO ASSEMBLE COMPACTOR 'B'

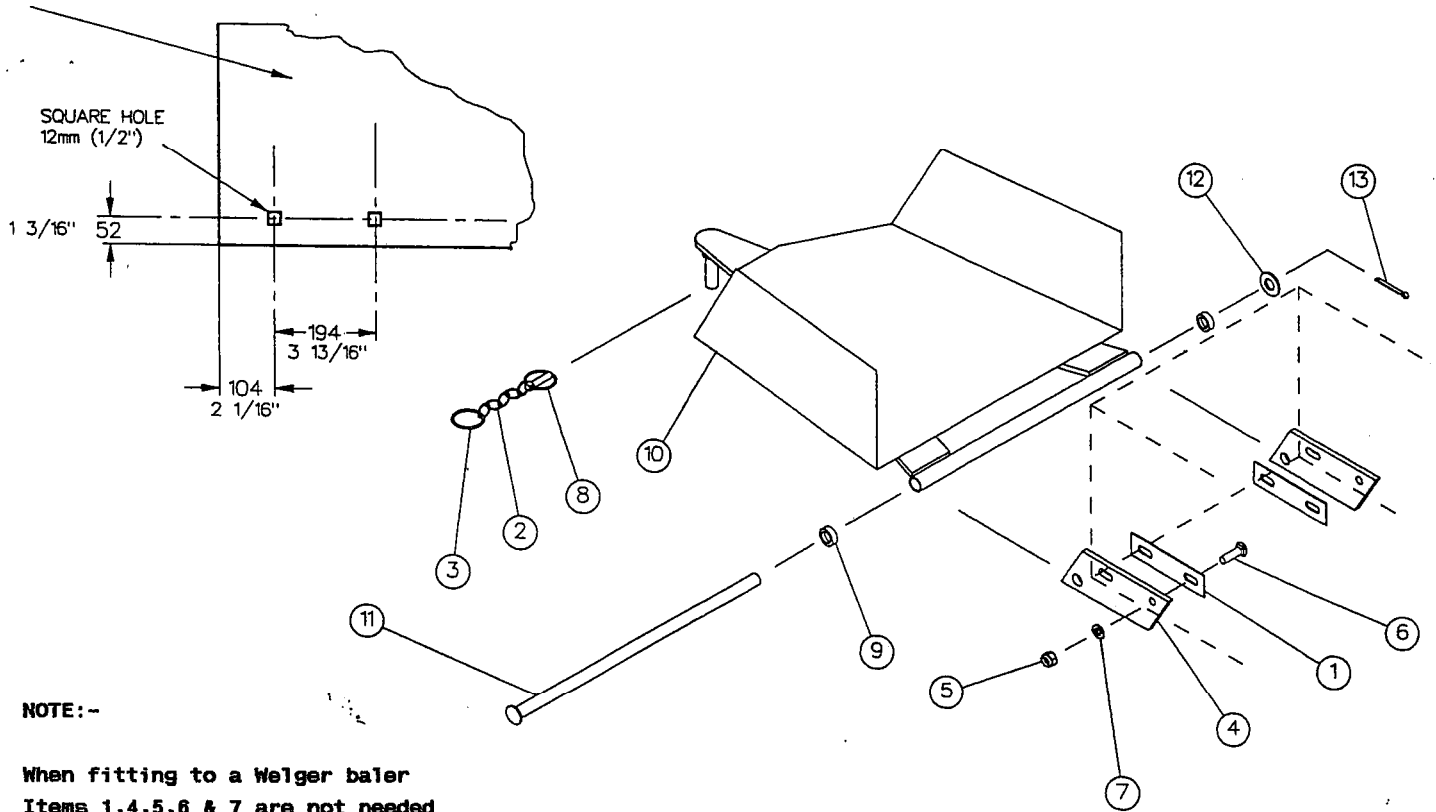


PARTS TO ASSEMBLE COMPACTOR 'B'

ITEM	PART NO	DESCRIPTION	QTY.
	52067	ASSEMBLY KIT (INCLUDES ALL BELOW)	
1	70011	M10 NYLOCK NUT	8
2	70012	M12 NYLOCK NUT	24
3	70063	M12 x 75 BOLT	2
4	70067	M10 x 50 BOLT	1
5	70145	M10 x 65 BOLT	1
6	70436	M12 x 65 BOLT	8
7	70437	M12 x 90 BOLT	4
8	70440	M12 x 35 SETSCREW	10

BALER CHUTE PARTS & FIXING GUIDE

BALER CHUTE



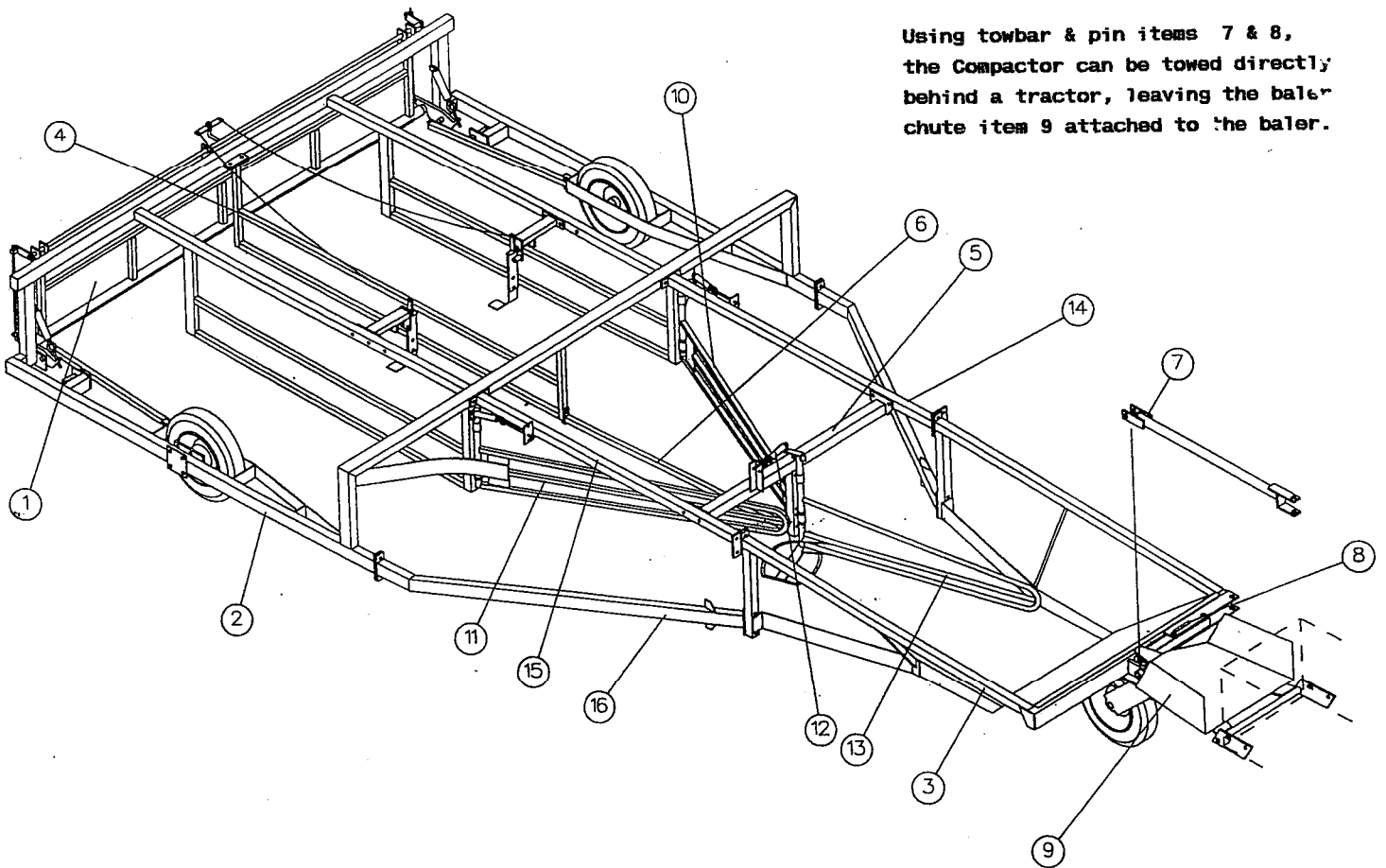
NOTE:--

When fitting to a Welger baler
Items 1,4,5,6 & 7 are not needed
as the bale chamber has plates
to receive pin item 11.

BALER CHUTE PARTS & FIXING GUIDE

ITEM	PART NO	DESCRIPTION	QTY.
1	11017	CHAMBER BACKING PLATE	2
2	11372	CHAIN	1
3	11374	KEY RING	2
4	14552	DRAWBAR ATTACHMENT PLATE	2
5	70012	M12 NYLOCK NUT	4
6	70070	M12 x 35 COACH BOLT	4
7	70136	M12 HEAVY WASHER	4
8	71322	LINCH PIN (NEW TYPE)	1
	52197	BALER ATTACHMENT KIT (INCLUDES ABOVE)	
9	14553	BALER CHUTE SPACER	2
10	51911	BALER CHUTE	1
11	51913	BALER CHUTE PIN	1
12	70073	M20 WASHER	1
13	70133	3/16" x 1 1/2" SPLIT PIN	1
	52341	BALER CHUTE & PIN KIT (INCLUDES ABOVE)	

MAIN FRAME PARTS

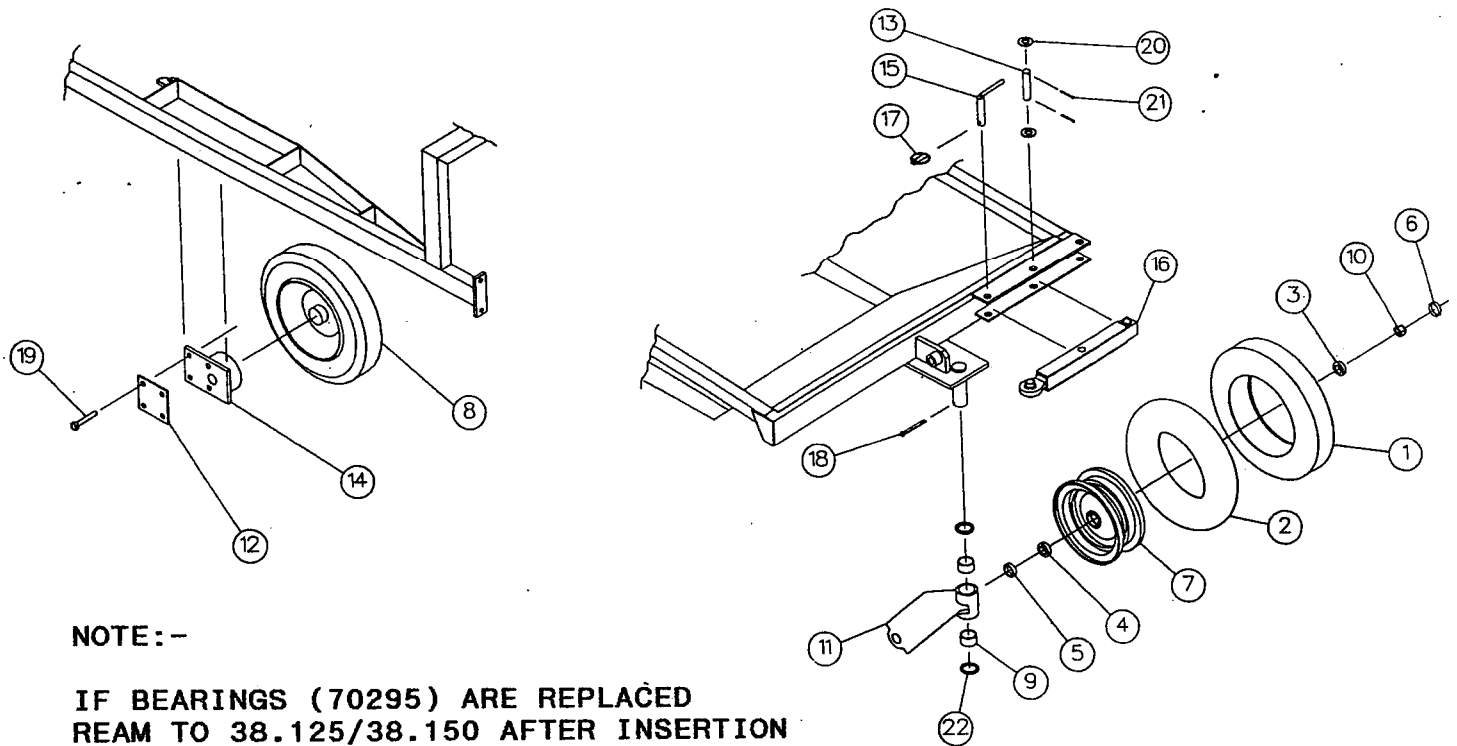


Using towbar & pin items 7 & 8,
the Compactor can be towed directly
behind a tractor, leaving the baler
chute item 9 attached to the baler.

MAIN FRAME PARTS

ITEM	PART NO	DESCRIPTION	QTY.
1	51118	TAILGATE	1
2	51119	MAIN FRAME	1
3	51126	CHUTE	1
4	51132	BALE DIVIDER	1
5	51135	FRONT SUPPORT	1
6	51136	FRONT DIVIDER	1
7	51434	TOW BAR	1
8	51681	PIN (SA 72)	1
9	51911	BALER CHUTE (BALL END BRACKET)	1
10	51972	REAR DEFLECTOR C/W LEAVES L.H.	1
11	51973	REAR DEFLECTOR C/W LEAVES R.H.	1
12	52042	SPRING, LONG EYE BOLT & NUTS	3
13	52135	FRONT DEFLECTOR (LONG)	1
14	52295	TOP SUPPORT L.H. (LONG)	1
15	52296	TOP SUPPORT R.H. (LONG)	1
16	52297	SIDE BEAM	2

BREAKDOWN OF WHEEL ASSEMBLY & ASSOCIATED PARTS



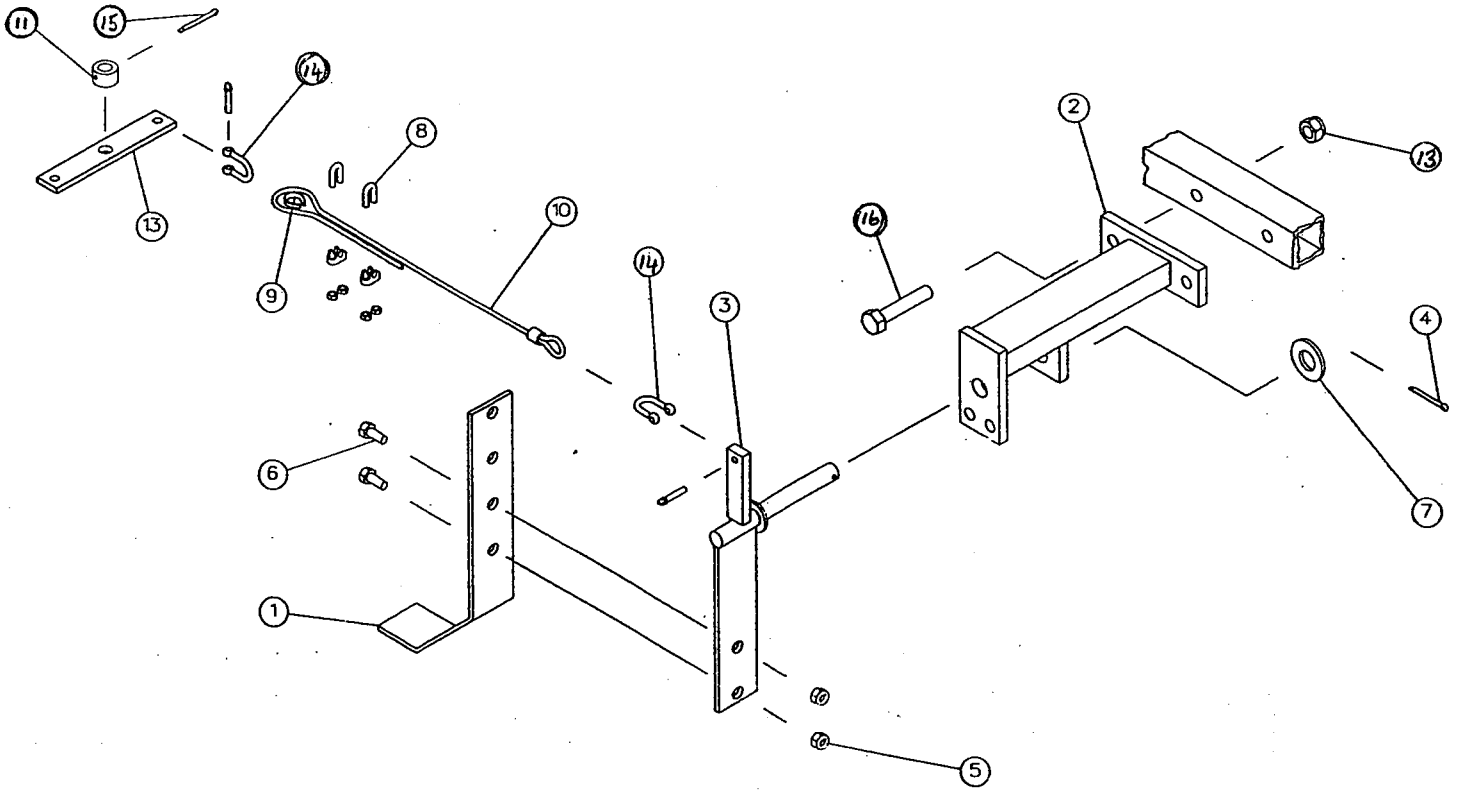
NOTE:-

IF BEARINGS (70295) ARE REPLACED
REAM TO 38.125/38.150 AFTER INSERTION

BREAKDOWN OF WHEEL ASSEMBLY & ASSOCIATED PARTS

<u>ITEM</u>	<u>PART NO</u>	<u>DESCRIPTION</u>	<u>QTY.</u>
1	90040	TYRE	1
2	90041	TUBE	1
3	90042	OUTER BEARING	1
4	90043	INNER BEARING	1
5	90044	SEAL	1
6	90045	HUB CAP	1
7	90046	WHEEL CENTRE (INCLUDES ITEMS 3,4,5 & 6)	1
8	50037	WHEEL ASSEMBLY INCLUDES ALL ABOVE (x 3)	
9	70295	BEARING	2
10	70342	M16 NYLOCK NUT	1
11	50025	FRONT CASTOR ASSEMBLY INCLUDES ITEMS 9/10	1
12	11726	CLAMP PLATE	2
13	11834	PIN	1
14	50813	WHEEL AXLE INCLUDES NUT	2
15	51681	PIN	1
16	51912	BALL END TOWBAR	1
17	70033	LINCH PIN	1
18	70035	1/4" x 2 1/2" LG SPLIT PIN	1
19	70063	M12 x 75 LG BOLT	8
20	70073	M20 WASHER	2
21	70133	3/16" x 1 1/2" LG SPLIT PIN	2
22	70189	M40 WASHER	2

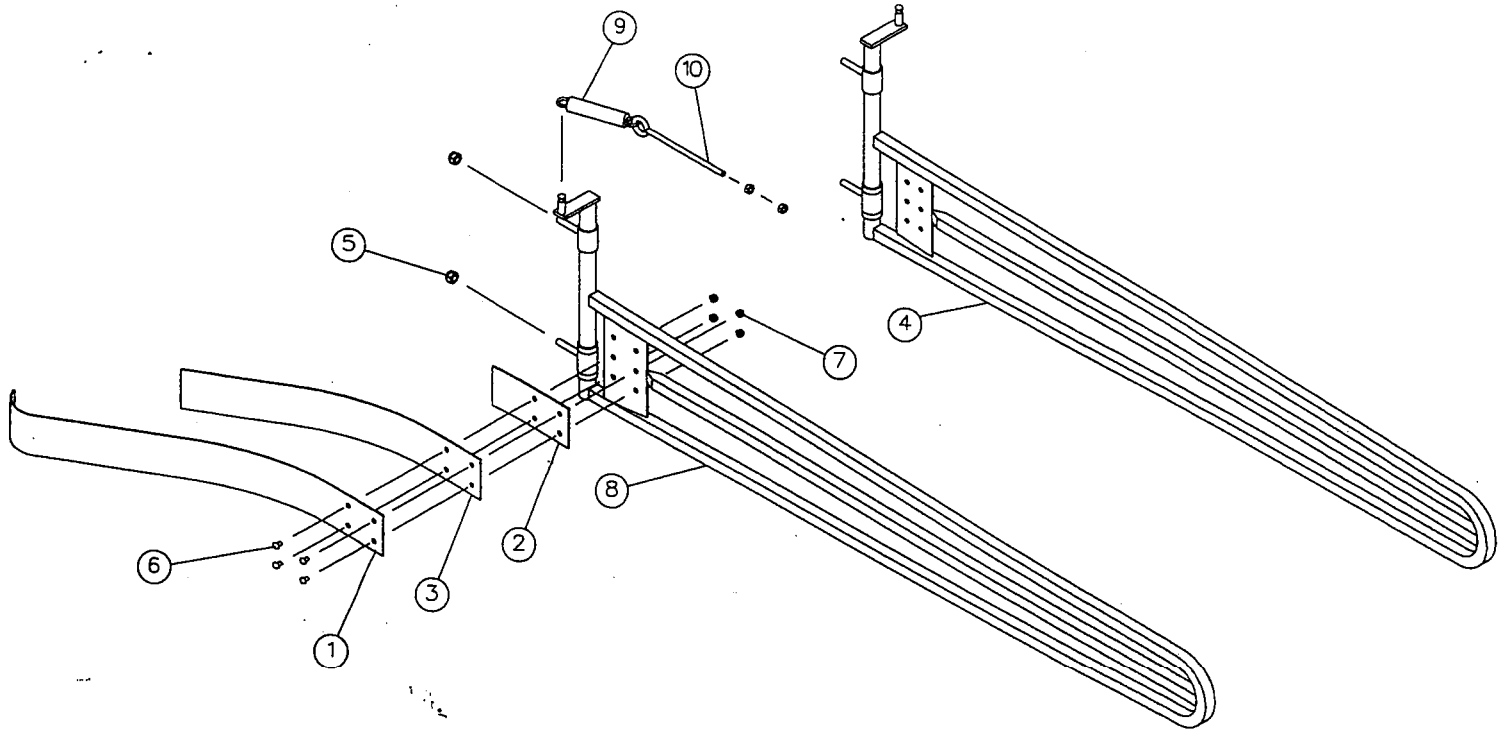
BREAKDOWN OF TRIP ASSEMBLY & ASSOCIATED PARTS



BREAKDOWN OF TRIP ASSEMBLY & ASSOCIATED PARTS

ITEM	PART NO	DESCRIPTION	QTY.
1	13228	TRIP ARM	1
2	51144	TRIP CARRIER	1
3	51433	TRIP	1
4	70133	3/16" x 1 1/2" COTTER PIN	1
5	70238	M8 NYLOCK NUT	2
6	70278	M8 x 20 SETSCREW	2
7	70726	M16 FLAT WASHER	1
	51712	TRIP ASSEMBLY INCLUDES ALL ABOVE (x 2 PER MC)	
8	70037	3/16" WIRE GRIP	2
9	70479	M4 THIMBLE	1
10	70821	TRIP WIRE	1
	51902	TRIP WIRE ASSEMBLY INCLUDES ALL ABOVE (x 2 PER MC)	
11	13939	TRIP BAR ACTIVATOR TOP STOP	1
12	13940	TRIP BAR ACTIVATOR SWIVEL BAR	1
13	70012	M12 NYLOCK NUT	4
14	70036	1/4" CHAIN SHACKLE	4
15	70133	3/16" x 1 1/2" COTTER PIN	1
16	70436	M12 x 65 LG BOLT	4

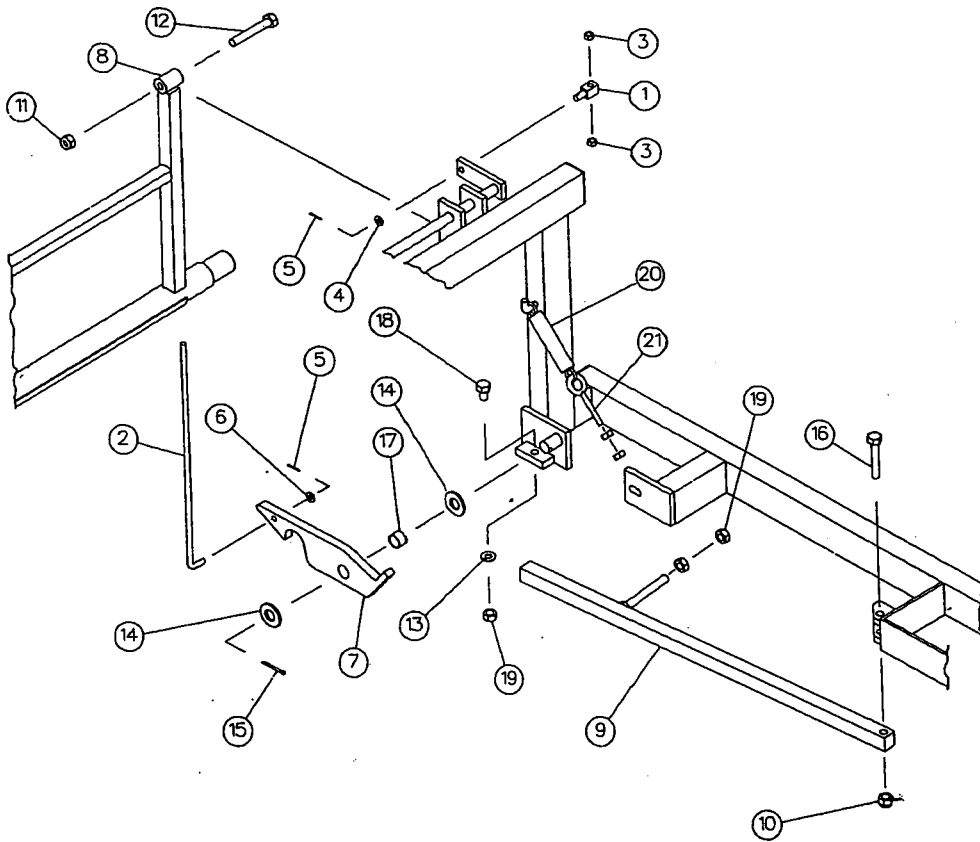
BREAKDOWN OF REAR DEFLECTORS



BREAKDOWN OF REAR DEFLECTORS

<u>ITEM</u>	<u>PART NO</u>	<u>DESCRIPTION</u>	<u>QTY.</u>
1	10089	DEFLECTOR SPRING FRONT	1
2	10090	DEFLECTOR SPRING BACK	1
3	10493	DEFLECTOR SPRING CENTRE	1
4	51138	REAR DEFLECTOR FRAME (LEFT HAND)	1
5	70011	M10 NYLOCK NUT	2
6	70071	M6 x 16 MUSHROOM HEAD BOLT	4
7	70322	M6 NYLOCK NUT	4
	51972	REAR DEFLECTOR ASSEMBLY (LEFT HAND) INCLUDES ABOVE	
1	10089	DEFLECTOR SPRING FRONT	1
2	10090	DEFLECTOR SPRING BACK	1
3	10493	DEFLECTOR SPRING CENTRE	1
4	51138	REAR DEFLECTOR FRAME (LEFT HAND)	1
5	70011	M10 NYLOCK NUT	2
6	70071	M6 x 16 MUSHROOM HEAD BOLT	4
7	70322	M6 NYLOCK NUT	4
	51973	REAR DEFLECTOR ASSEMBLY (RIGHT HAND) INCLUDES ABOVE	
9	70190	EXTENSION SPRING	1
10	10092	M8 x 140 EYE BOLT INCLUDES NUTS	1
	52042	LONG EYEBOLT ASSEMBLY INCLUDES ABOVE (x 3 PER MC)	

BREAKDOWN OF TAILGATE & ASSOCIATED PARTS



BREAKDOWN OF TAILGATE & ASSOCIATED PARTS

<u>ITEM</u>	<u>PART NO</u>	<u>DESCRIPTION</u>	<u>QTY.</u>
1	12782	TOP CONNECTING LINK	1
2	12784	ADJUSTER ROD	1
3	70165	M8 FLAT NUT	2
4	70236	M10 FLAT WASHER	1
5	70353	3/32" x 3/4" PIN	2
6	70438	M8 FLAT WASHER	1
7	52266	REAR ROD ASSEMBLY INCLUDES ALL ABOVE (x 2)	
	50434	GATE CATCH INCLUDING BUSH	2
8	51118	TAILGATE	1
9	51134	BALE GUIDE INCLUDING NUTS	2
10	70011	M10 NYLOCK NUT	2
11	70012	M12 NYLOCK NUT	2
12	70063	M12 x 75 BOLT	2
13	70064	M12 SPRING WASHER	2
14	70073	M20 FLAT LIGHT WASHER	4
15	70133	3/16" x 1 1/2" SPLIT PIN	2
16	70145	M10 x 65 BOLT	2
17	70193	CATCH BUSH	2
18	70229	M12 x 30 SETSCREW	2
19	70725	M12 FLAT NUT	6
20	70190	EXTENSION SPRING	1
21	71071	M8 X 90 EYEBOLT INCLUDING NUTS	1
	51716	SHORT EYEBOLT ASSEMBLY INCLUDES ITEMS 20/21 (x 2)	



EC DECLARATION OF CONFORMITY

Manufacturer : Browns Agricultural Machinery Co. Ltd.
Description of Machinery : Compactor 'B' Eight Bale Accumulator
Model Number : 65300

This machine complies with EC Directives, Transposed Harmonised Standards, National Standards and Technical Specifications as follows:

89/392/EEC 91/386/EEC 93/44/EEC 93/68/EEC EN 292 pr EN 691

The machinery has been designed taking into account the essential Health & Safety Standards as detailed in the Supply of Machinery (Safety Regulations) 1992.

For and on behalf of the Manufacturer

Name : J. W. G. BROWN
Status : MANAGING DIRECTOR

The above machinery taking into account the state of art, complies with or is designed and constructed so far as possible, to comply with the relevant Health & Safety requirements as indicated in the Technical file.

THE COMPANY IS CONTINUALLY STRIVING TO IMPROVE ITS PRODUCTS AND RESERVES THE RIGHT TO MAKE IMPROVEMENTS OR CHANGES WITHOUT INCURRING ANY OBLIGATION TO ALTER ANY OF ITS MACHINES PREVIOUSLY SOLD.